

---

## **SPECIFIC LOCATIONS**

**13 Drogheda**

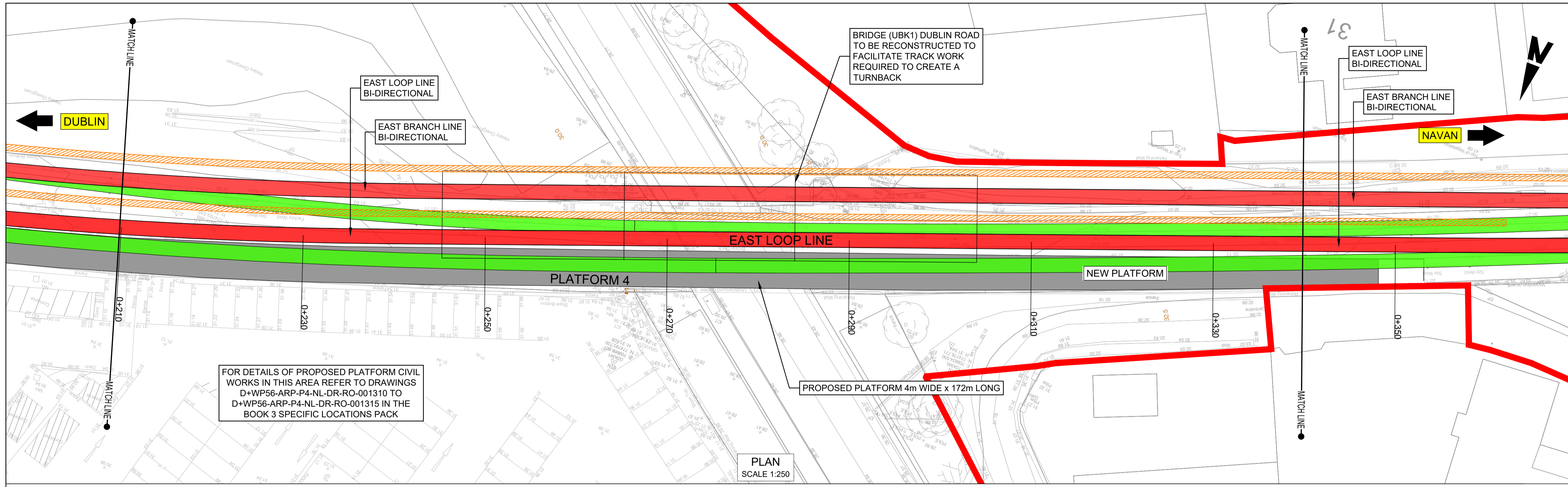
---

---

**DROGHEDA MACBRIDE  
STATION**

New Platform 4

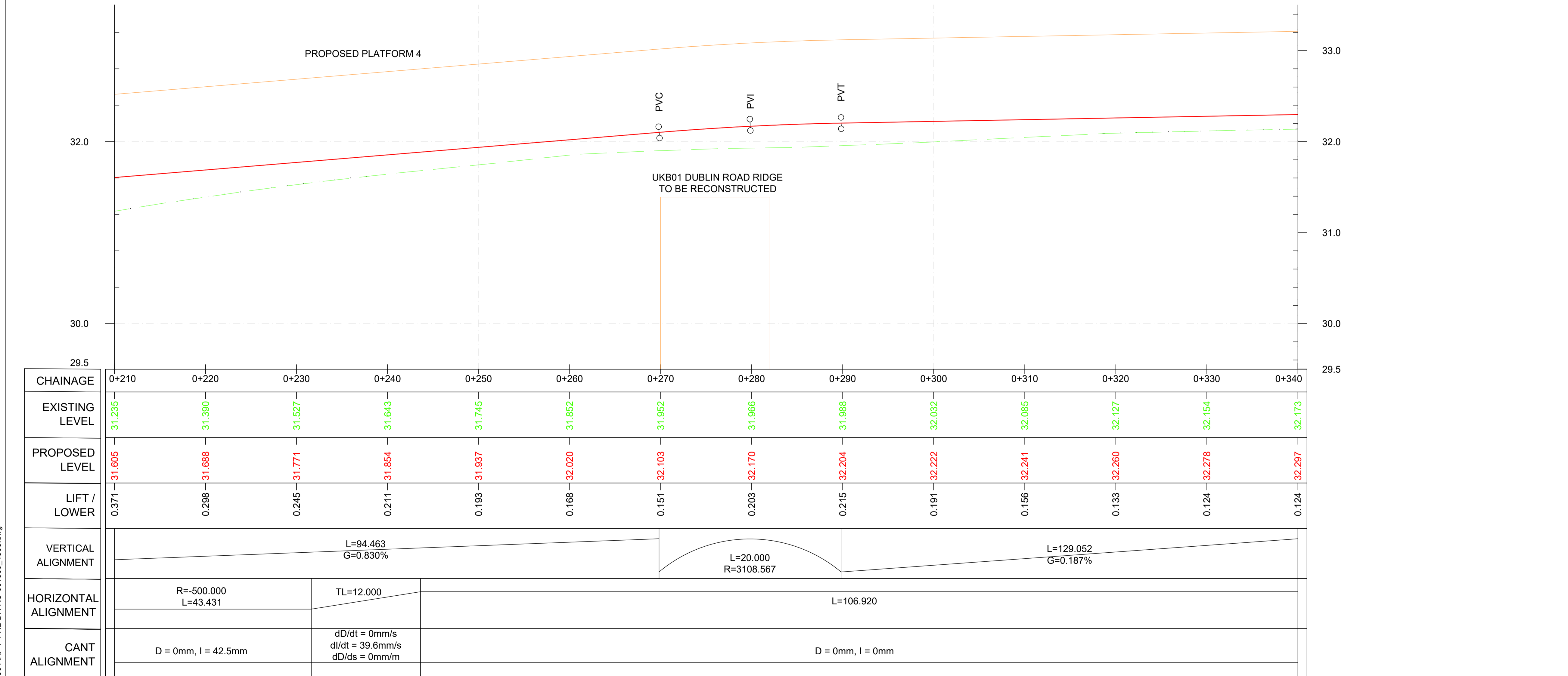
---



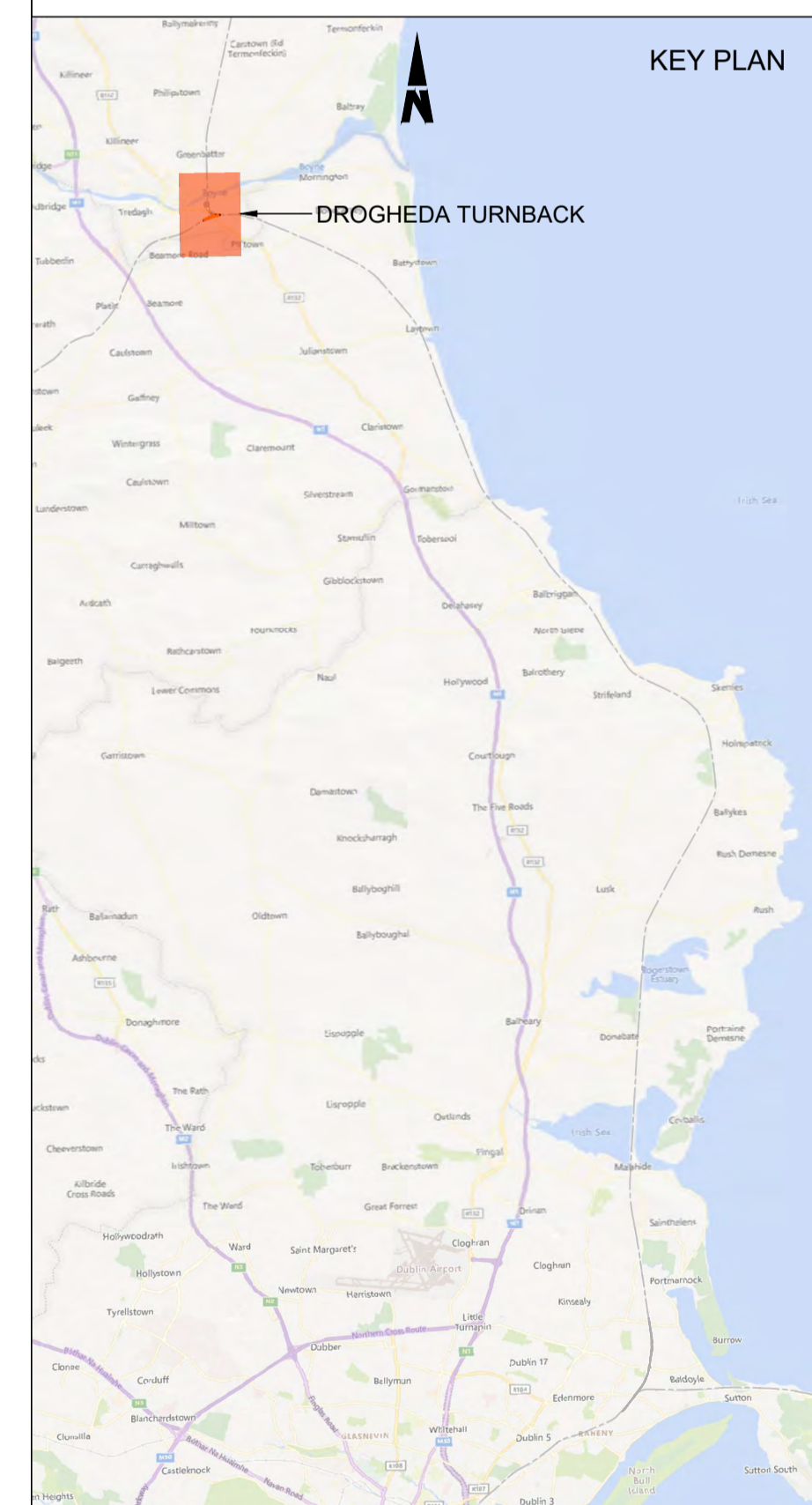
PLAN  
SCALE 1:250

- NOTES**
- Chainages, levels and coordinates are shown in meters. All other dimensions are shown in millimeters, unless otherwise stated. All clearance and six-foot intervals are quoted to running edges (RE)
  - The maximum available length for a raised driver walkway has been shown. The exact length may be shorter and will be determined at the detailed stage of design
  - Track gauge to be nominal 1602mm for plain line and 1600mm for P&C
  - All P&C shall be vertical rail. All P&C geometries shall be in accordance with IE manufacturers' drawings and CCE-TMS-300 Track Construction Requirements and Tolerances
  - Radii quoted are from track centreline, unless otherwise stated
  - Modular compliant layouts throughout
  - Proposed and existing overhead line equipment (OHLE) is not shown in plan or profile. Refer to Book 3 Linear Works Plans for OHLE shown in plan.
  - For details of lineside civils infrastructure such as troughing routes and substations, refer to the Book 3 Linear Works Plans.

- LEGEND**
- PLAN**
- DEVELOPMENT BOUNDARY
  - RUNNING LINE
  - SIDINGS
  - PROPOSED TRACK WORK
  - TRACK WORK TO BE REMOVED
  - EXISTING STATION PLATFORMS
  - RAISED 1.38m DRIVER WALKWAY
  - CESS WALKWAY
  - PROPOSED STATION PLATFORMS
- LONGITUDINAL PROFILE**
- PROPOSED MAIN RAIL
  - EXISTING MAIN RAIL
  - EXISTING GROUND
- PVC (Point of Start of Curve)  
PVT (Point of Start of Tangent)  
PVI (Point of Intersection)
- CROSS SECTION**
- PROPOSED ELEMENTS
  - EXISTING ELEMENTS
  - EXISTING GROUND



EAST LOOP LINE PROFILE  
SCALE 1:250 (H) 1:25 (V)



KEY PLAN

C:\bms\arup-eur-pw-01\dms\373451D+WP56-ARP-P4-NL-DR-RO-001300\_1305.dwg

**Disclaimer**

© Irish Rail (2023). This drawing is confidential and the copyright in it is owned by Irish Rail. This drawing must not be either loaned, copied or otherwise reproduced in whole or in part or used for any purpose without the prior permission of Irish Rail.

© OpenStreetMap contributors

© Ordnance Survey Ireland and Government of Ireland. All O.S. data used for plans are printed under Copyright Ordnance Survey Ireland 0039723 (OSI Aerial Data or OSI Lidar Data) & 2023/OSI, NMA, 150 (OSI Vector Data). All elevations are in metres and relate to OSI Geoid Model (OSGM02) Mean Head as defined by existing Project Control. All Co-ordinates are in Irish Transverse Mercator Grid (ITM) as defined by OSI active GPS station Tallaght College (TLG).



Rev	Date	Drn	Chk'd	App'd	Description
P01	13/10/2023	CF	SS	DS	PLANNING ISSUE

Client: **Iarnród Éireann Irish Rail**

Engineering Designer: **ARUP**

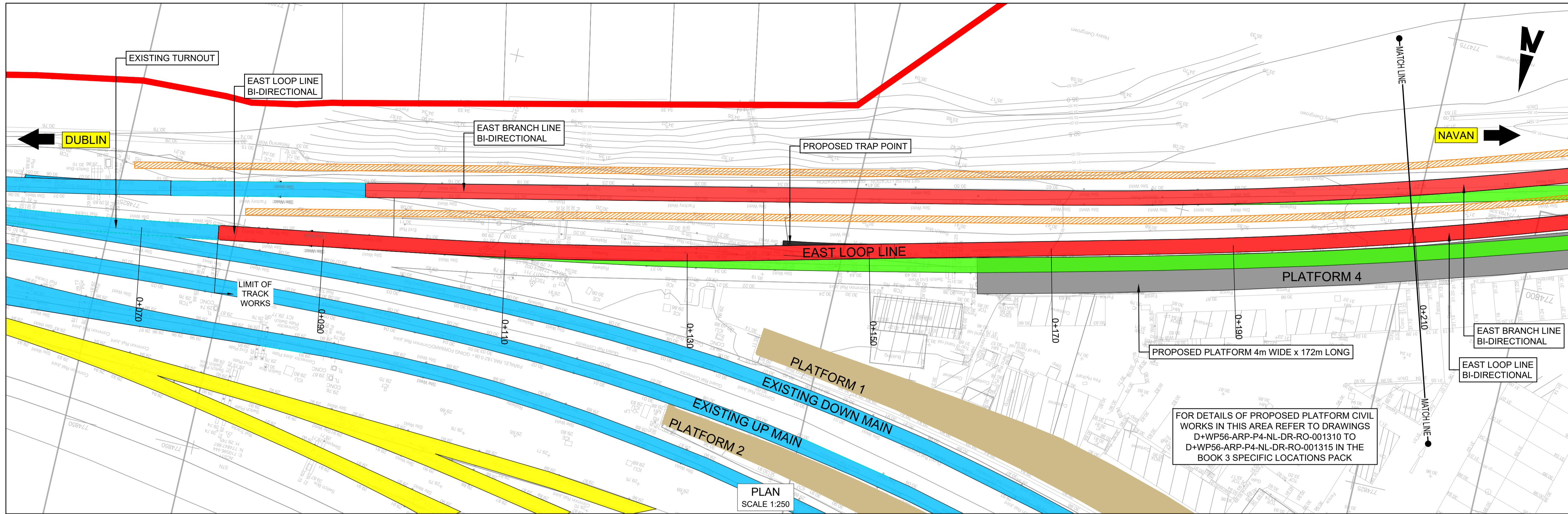
Date: 01/06/2023 | Scale: AS SHOWN @ A1

Drawn: CF | Checked: SS | Approved: DB

Project Code: D+WP56 | Originator Code: ARP | QMS Code: 280275-00

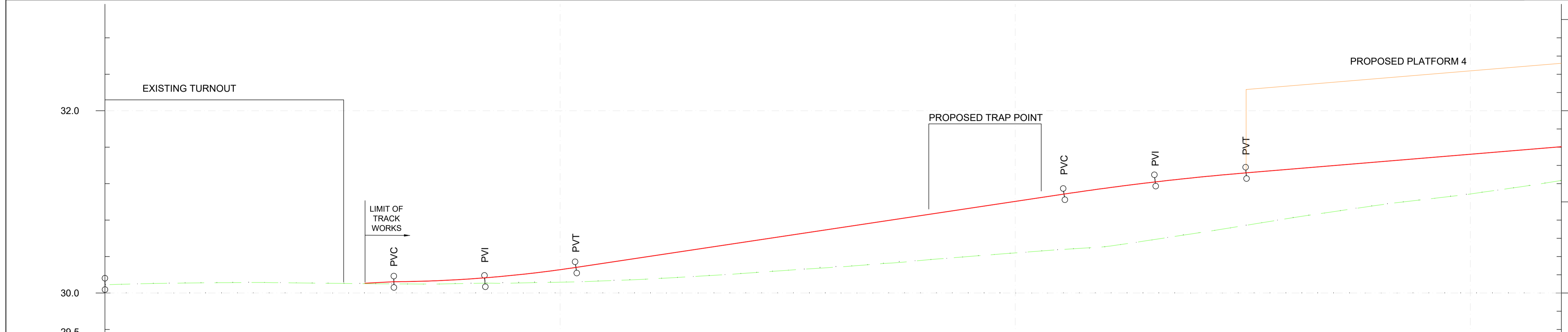
Project Title	<b>DART+ COASTAL NORTH</b>		
Drawing Title	<b>DROGHEDA TURNBACK TRACK ALIGNMENT</b>		
Drawing File Name	D+WP56-ARP-P3-NL-DR-RO-001301	Sheet Number	02 of 06
Status	S3	Rev	P01

DO NOT SCALE USE FIGURED DIMENSIONS ONLY



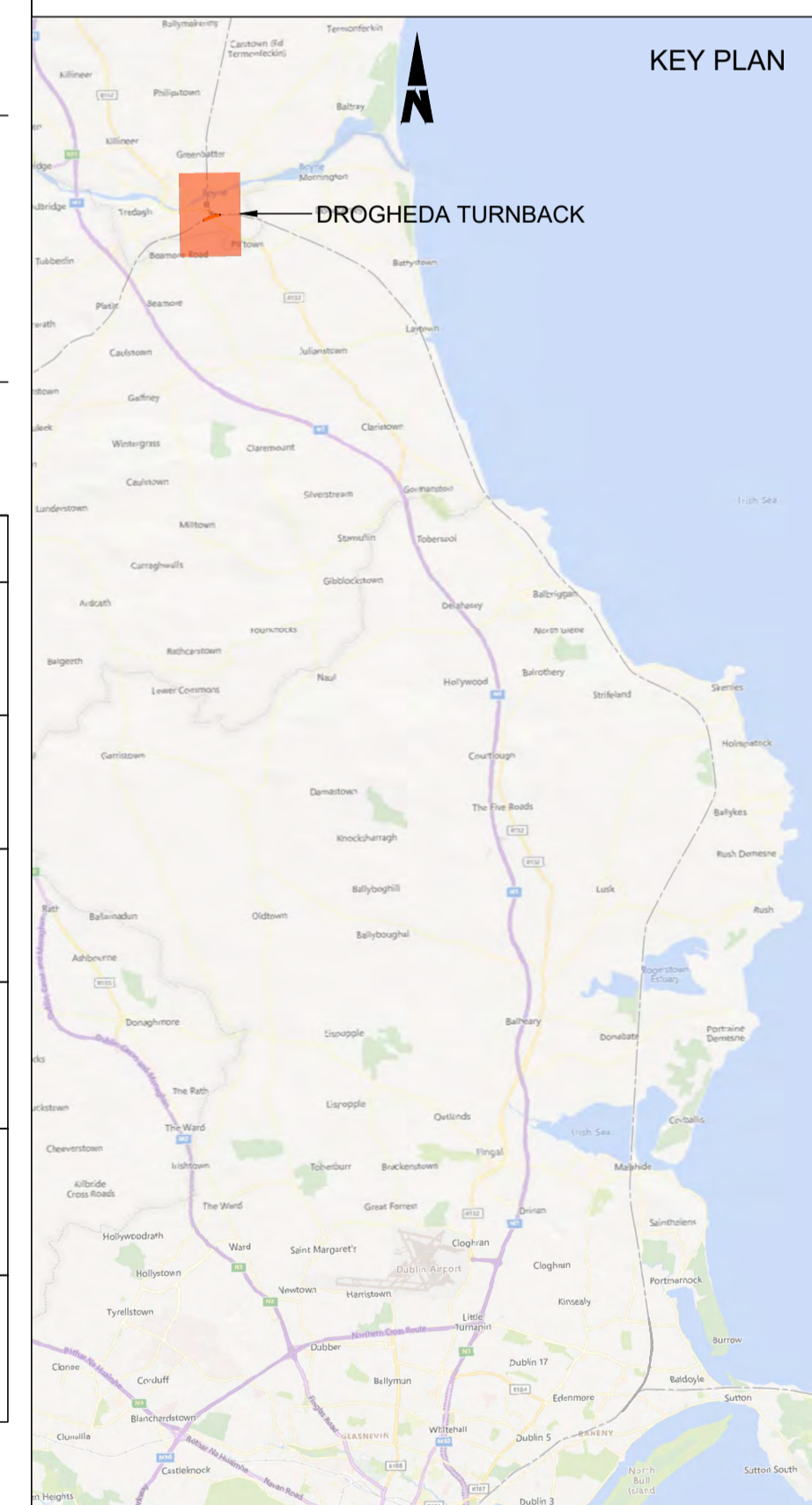
- NOTES**
- Chainages, levels and coordinates are shown in meters. All other dimensions are shown in millimeters, unless otherwise stated. All clearance and six-foot intervals are quoted to running edges (RE)
  - The maximum available length for a raised driver walkway has been shown. The exact length may be shorter and will be determined at the detailed stage of design
  - Track gauge to be nominal 1602mm for plain line and 1600mm for P&C
  - All P&C shall be vertical rail. All P&C geometries shall be in accordance with IE manufacturers' drawings and CCE-TMS-300 Track Construction Requirements and Tolerances
  - Radii quoted are from track centreline, unless otherwise stated
  - Modular compliant layouts throughout
  - Proposed and existing overhead line equipment (OHLE) is not shown in plan or profile. Refer to Book 3 Linear Works Plans for OHLE shown in plan.
  - For details of lineside civils infrastructure such as troughing routes and substations, refer to the Book 3 Linear Works Plans.

- LEGEND**
- PLAN**
- DEVELOPMENT BOUNDARY
  - RUNNING LINE
  - SIDINGS
  - PROPOSED TRACK WORK
  - TRACK WORK TO BE REMOVED
  - EXISTING STATION PLATFORMS
  - RAISED 1.38m DRIVER WALKWAY
  - CESS WALKWAY
  - PROPOSED STATION PLATFORMS
- LONGITUDINAL PROFILE**
- PROPOSED MAIN RAIL
  - EXISTING MAIN RAIL
  - EXISTING GROUND
- PVC (Point of Start of Curve)  
PVT (Point of Start of Tangent)  
PVI (Point of Intersection)
- CROSS SECTION**
- PROPOSED ELEMENTS
  - EXISTING ELEMENTS
  - EXISTING GROUND



CHAINAGE	0+050	0+060	0+070	0+080	0+090	0+100	0+110	0+120	0+130	0+140	0+150	0+160	0+170	0+180	0+190	0+200	0+210
EXISTING LEVEL	30.090	30.110	30.111	30.101	30.105	30.118	30.154	30.214	30.281	30.360	30.439	30.508	30.658	30.817	30.965	31.086	31.235
PROPOSED LEVEL	30.099	30.107	30.114	30.122	30.153	30.255	30.404	30.554	30.704	30.854	31.005	31.151	31.288	31.356	31.439	31.522	31.605
LIFT / LOWER	0.009	-0.003	0.003	0.021	0.049	0.137	0.250	0.341	0.424	0.494	0.565	0.643	0.611	0.559	0.474	0.436	0.371
VERTICAL ALIGNMENT	L=31.844 G=0.074%			L=20.000 R=1402.667			L=53.552 G=1.500%			L=20.096 R=3000.000			L=94.463 G=0.830%				
HORIZONTAL ALIGNMENT	R=-326.564 L=21.539		L=26.155			R=-500.000m L=40.661m			L=37.935			TL=12.000		R=-500.000 L=43.431			
CANT ALIGNMENT	D = 0mm, I = 65.1mm		D = 0mm, I = 0mm			D = 0mm, I = 42.6mm			D = 0mm, I = 0mm			dI/dt = 0mm/s dI/ds = 39.6mm/m dD/ds = 0mm/m		D = 0mm, I = 42.5mm			

**EAST LOOP LINE PROFILE**  
SCALE 1:250 (H) 1:25 (V)



C:\bms\arup-eur-pw-01\dms37345D-WP56-ARP-P4-NL-DR-RO-001300\_1305.dwg

**Disclaimer**

© Irish Rail (2023). This drawing is confidential and the copyright in it is owned by Irish Rail. This drawing must not be either loaned, copied or otherwise reproduced in whole or in part or used for any purpose without the prior permission of Irish Rail.

© OpenStreetMap contributors

© Ordnance Survey Ireland and Government of Ireland. All O.S. data used for plans are printed under Copyright Ordnance Survey Ireland 0039723 (OSI Aerial Data or OSI Lidar Data) & 2023/OSI, MMA, 150 (OSI Vector Data). All elevations are in metres and relate to OSI Geoid Model (OSGM02) Mean Head as defined by existing Project Control. All Co-ordinates are in Irish Transverse Mercator Grid (ITM) as defined by OSI active GPS station Tallaght College (TLG).

Rev	Date	Drn	Chk'd	App'd	Description
P01	13/10/2023	CF	SS	DS	PLANNING ISSUE

Client: **Iarnród Éireann Irish Rail**

Engineering Designer: **ARUP**

Date: 01/06/2023 | Scale: AS SHOWN @ A1 | Drawn: CF | Checked: SS | Approved: DB

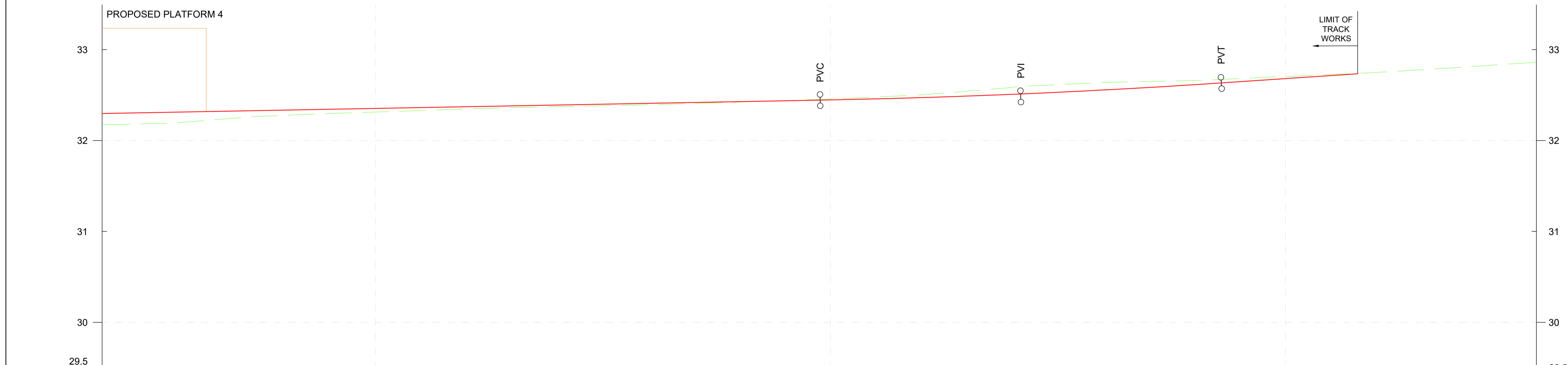
Project Code: D+WP56 | Originator Code: ARP | QMS Code: 280275-00

Project Title	<b>DART+ COASTAL NORTH</b>		
Drawing Title	<b>DROGHEDA TURNBACK TRACK ALIGNMENT</b>		
Drawing File Name	Sheet Number	Status	Rev
D+WP56-ARP-P3-NL-DR-RO-001300	01 of 06	S3	P01

DO NOT SCALE USE FIGURED DIMENSIONS ONLY



PLAN  
SCALE 1:250

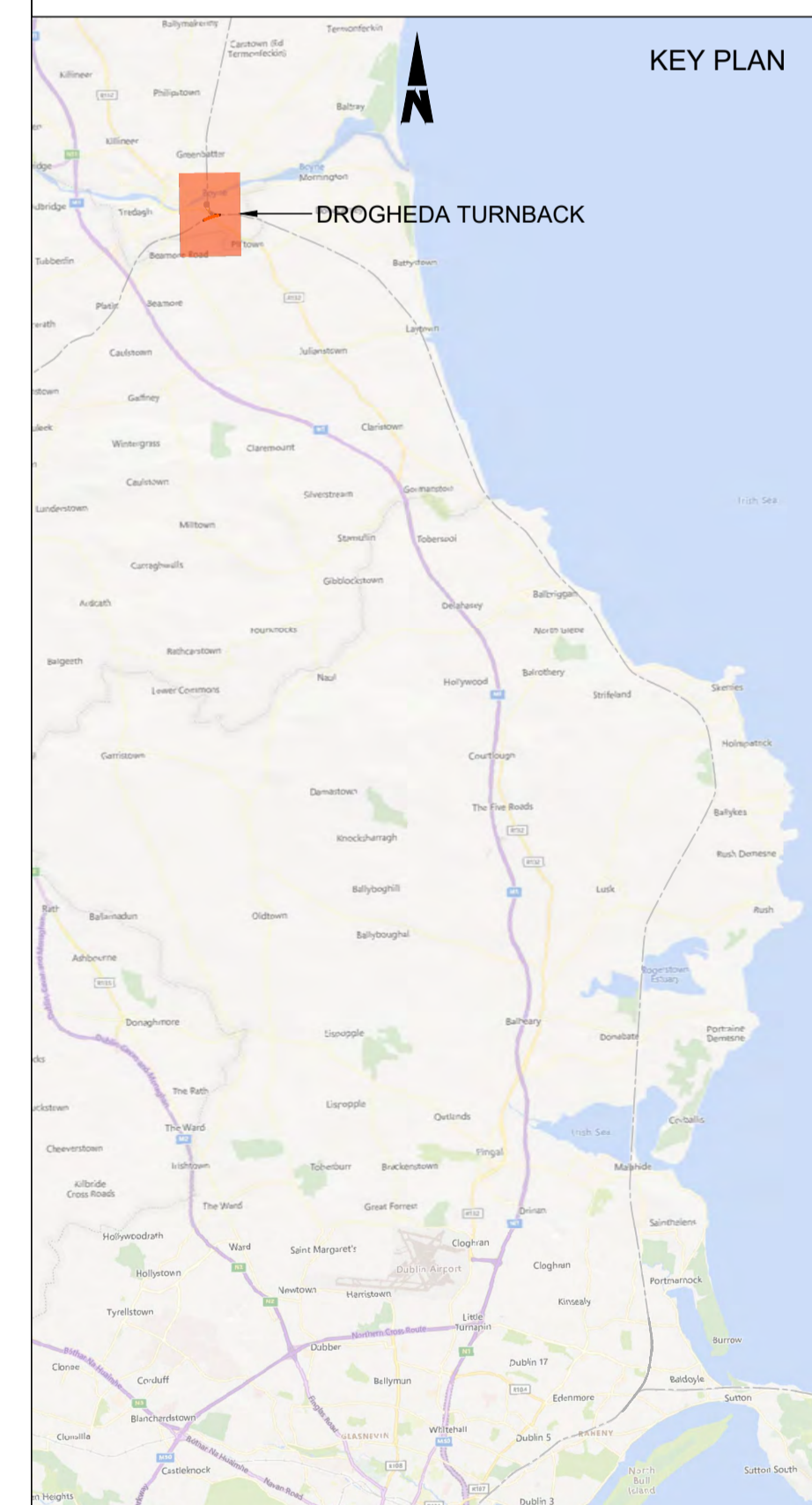


EAST LOOP LINE PROFILE  
SCALE 1:250 (H) 1:25 (V)

CHAINAGE	0+340	0+350	0+360	0+370	0+380	0+390	0+400	0+410	0+420	0+430	0+440	0+450	0+460	0+470	0+480	0+490	0+498
EXISTING LEVEL	32.173	32.209	32.209	32.276	32.348	32.373	32.393	32.423	32.457	32.504	32.585	32.637	32.659	32.704	32.749	32.810	32.861
PROPOSED LEVEL	32.297	32.316	32.334	32.353	32.372	32.390	32.409	32.428	32.446	32.472	32.508	32.556	32.614	32.681	32.748	32.815	32.866
LIFT / LOWER	0.124	0.107	0.058	0.040	0.024	0.018	0.016	0.005	-0.011	-0.032	-0.077	-0.082	-0.045	-0.024	-0.001	0.005	0.005
VERTICAL ALIGNMENT	L=129.052 G=0.186%								L=44.072 R=9096.611				L=34.615 G=0.671%				
HORIZONTAL ALIGNMENT	L=106.920		TL=15.000		R=-900.000 L=85.282						TL=15.000		R=-2423.171 L=31.748				
CANT ALIGNMENT	D = 0mm I = 0mm		dD/dt = 0mm/s dl/dt = 17.6mm/s dD/ds = 0mm/m		D = 0mm, I = 23.6mm						dD/dt = 0mm/s dl/dt = 11.1mm/s dD/ds = 0mm/m		D = 0mm, I = 8.8mm				

- NOTES**
- Chainages, levels and coordinates are shown in meters. All other dimensions are shown in millimeters, unless otherwise stated. All clearance and six-foot intervals are quoted to running edges (RE)
  - The maximum available length for a raised driver walkway has been shown. The exact length may be shorter and will be determined at the detailed stage of design
  - Track gauge to be nominal 1602mm for plain line and 1600mm for P&C
  - All P&C shall be vertical rail. All P&C geometries shall be in accordance with IE manufacturers' drawings and CCE-TMS-300 Track Construction Requirements and Tolerances
  - Radii quoted are from track centreline, unless otherwise stated
  - Modular compliant layouts throughout
  - Proposed and existing overhead line equipment (OHLE) is not shown in plan or profile. Refer to Book 3 Linear Works Plans for OHLE shown in plan.
  - For details of lineside civils infrastructure such as troughing routes and substations, refer to the Book 3 Linear Works Plans.

- LEGEND**
- PLAN**
- DEVELOPMENT BOUNDARY
  - RUNNING LINE
  - SIDINGS
  - PROPOSED TRACK WORK
  - TRACK WORK TO BE REMOVED
  - EXISTING STATION PLATFORMS
  - RAISED 1.38m DRIVER WALKWAY
  - CESS WALKWAY
  - PROPOSED STATION PLATFORMS
- LONGITUDINAL PROFILE**
- PROPOSED MAIN RAIL
  - EXISTING MAIN RAIL
  - EXISTING GROUND
- PVC (Point of Start of Curve)  
PVI (Point of Intersection)  
PVT (Point of Start of Tangent)
- CROSS SECTION**
- PROPOSED ELEMENTS
  - EXISTING ELEMENTS
  - EXISTING GROUND



C:\bms\arup-eur-pw-01\dms\37345D-WP56-ARP-P4-NL-DR-RO-001300\_1305.dwg

**Disclaimer**  
 © Irish Rail (2023). This drawing is confidential and the copyright in it is owned by Irish Rail. This drawing must not be either loaned, copied or otherwise reproduced in whole or in part or used for any purpose without the prior permission of Irish Rail.  
 © OpenStreetMap contributors  
 © Ordnance Survey Ireland and Government of Ireland. All O.S. data used for plans are printed under Copyright Ordnance Survey Ireland 0039723 (OSI Aerial Data or OSI Lidar Data) & 2023/OSI, NMA, 150 (OSI Vector Data). All elevations are in metres and relate to OSI Geoid Model (OSGM02) Mean Head as defined by existing Project Control. All Co-ordinates are in Irish Transverse Mercator Grid (ITM) as defined by OSI active GPS station Tallaght College (TLG).



Rev	Date	Drn	Chk'd	App'd	Description
P01	13/10/2023	CF	SS	DS	PLANNING ISSUE

Client: **Iarnród Éireann Irish Rail**

Engineering Designer: **ARUP**

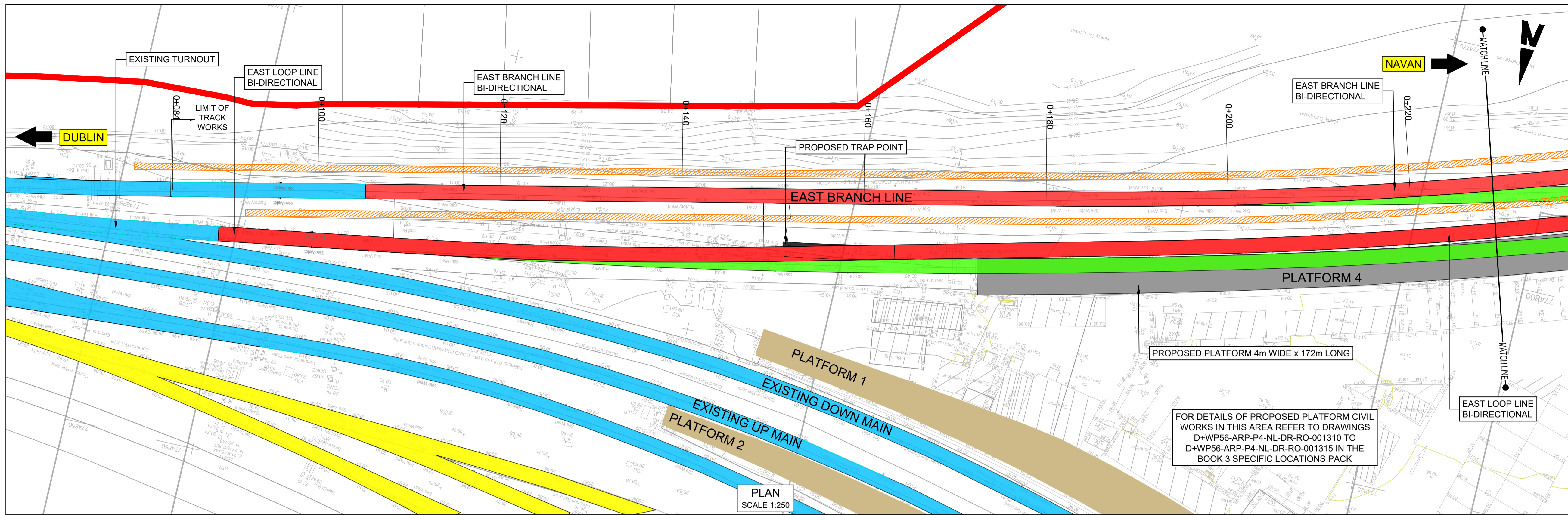
Date: 01/06/2023 | Scale: AS SHOWN @ A1

Drawn: CF	Checked: SS	Approved: DB
-----------	-------------	--------------

Project Code: D+WP56 | Originator Code: ARP | QMS Code: 280275-00

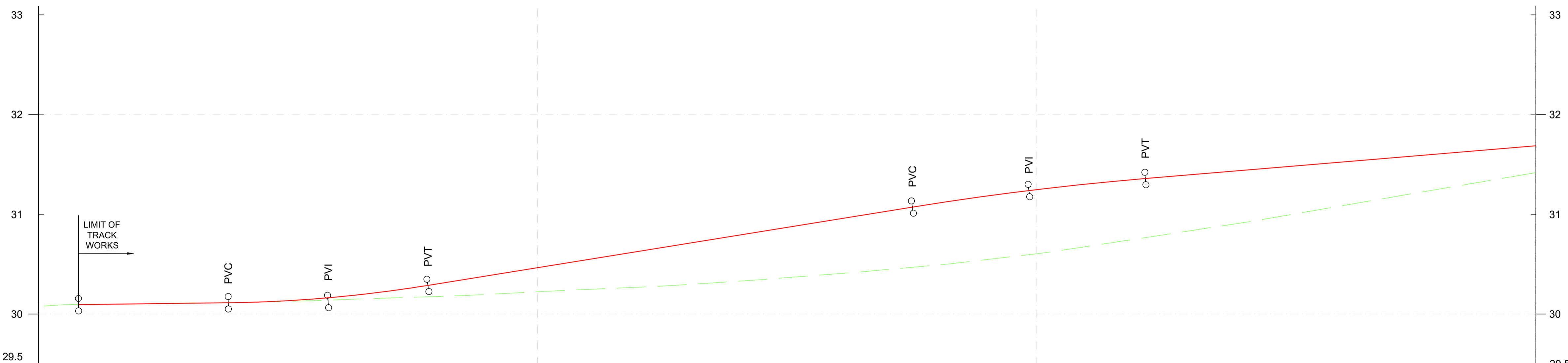
Project Title: <b>DART+ COASTAL NORTH</b>			
Drawing Title: <b>DROGHEDA TURNBACK TRACK ALIGNMENT</b>			
Drawing File Name: D+WP56-ARP-P3-NL-DR-RO-001302	Sheet Number: 03 of 06	Status: S3	Rev: P01

DO NOT SCALE USE FIGURED DIMENSIONS ONLY



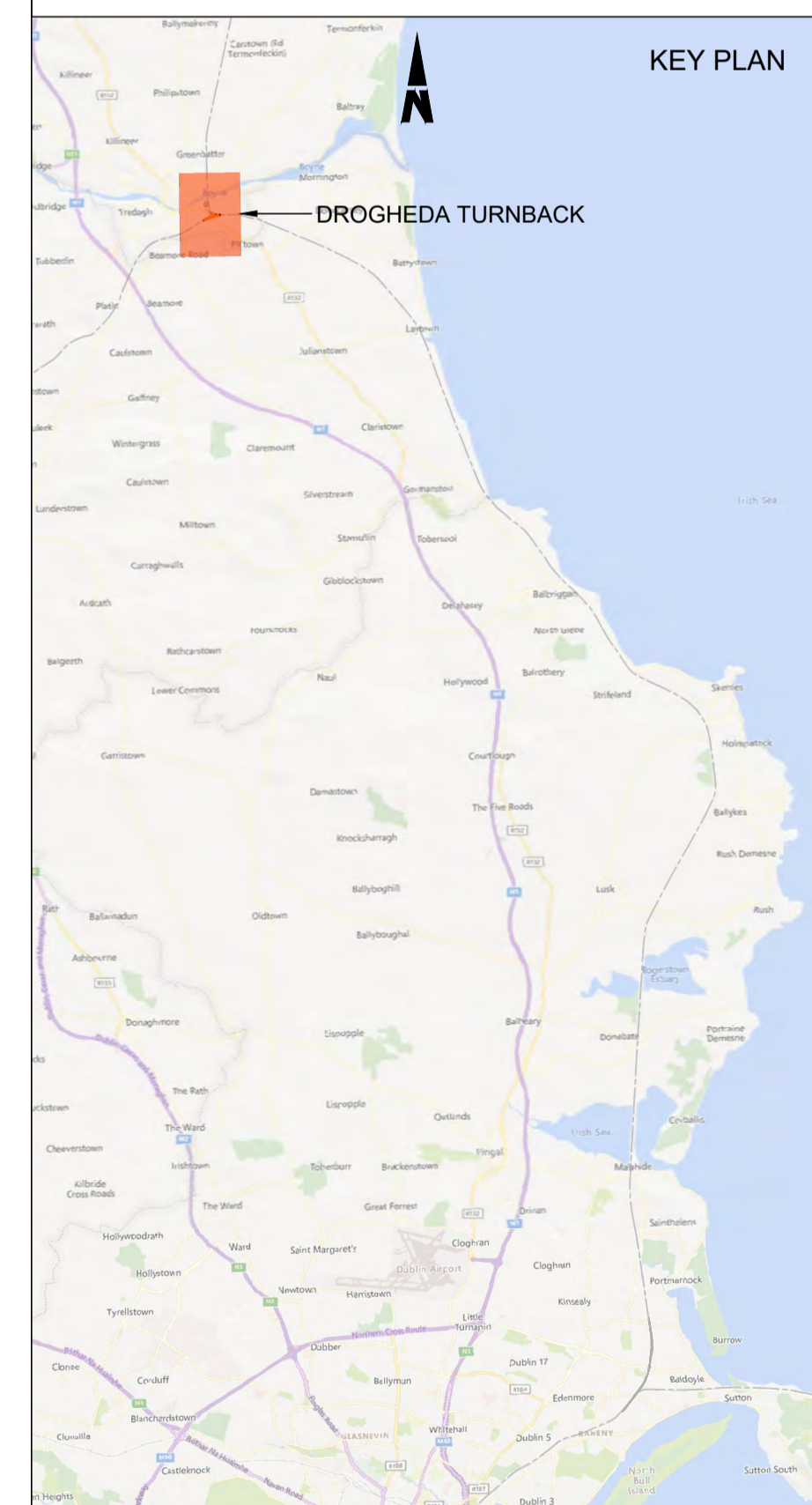
- NOTES**
- Chainages, levels and coordinates are shown in meters. All other dimensions are shown in millimeters, unless otherwise stated. All clearance and six-foot intervals are quoted to running edges (RE)
  - The maximum available length for a raised driver walkway has been shown. The exact length may be shorter and will be determined at the detailed stage of design
  - Track gauge to be nominal 1602mm for plain line and 1600mm for P&C
  - All P&C shall be vertical rail. All P&C geometries shall be in accordance with IE manufacturers' drawings and CCE-TMS-300 Track Construction Requirements and Tolerances
  - Radii quoted are from track centreline, unless otherwise stated
  - Modular compliant layouts throughout
  - Proposed and existing overhead line equipment (OHLE) is not shown in plan or profile. Refer to Book 3 Linear Works Plans for OHLE shown in plan.
  - For details of lineside civils infrastructure such as troughing routes and substations, refer to the Book 3 Linear Works Plans.

- LEGEND**
- PLAN**
- DEVELOPMENT BOUNDARY
  - RUNNING LINE
  - SIDINGS
  - PROPOSED TRACK WORK
  - TRACK WORK TO BE REMOVED
  - EXISTING STATION PLATFORMS
  - RAISED 1.38m DRIVER WALKWAY
  - CESS WALKWAY
  - PROPOSED STATION PLATFORMS
- LONGITUDINAL PROFILE**
- PROPOSED MAIN RAIL
  - EXISTING MAIN RAIL
  - EXISTING GROUND
- PVC (Point of Start of Curve)  
PVT (Point of Start of Tangent)  
PVI (Point of Intersection)
- CROSS SECTION**
- PROPOSED ELEMENTS
  - EXISTING ELEMENTS
  - EXISTING GROUND



CHAINAGE	0+084	0+090	0+100	0+110	0+120	0+130	0+140	0+150	0+160	0+170	0+180	0+190	0+200	0+210	0+220	0+230
EXISTING LEVEL	30.098	30.102	30.116	30.143	30.176	30.223	30.269	30.328	30.404	30.490	30.605	30.753	30.906	31.076	31.248	31.417
PROPOSED LEVEL	30.094	30.102	30.115	30.172	30.303	30.465	30.627	30.788	30.950	31.111	31.247	31.351	31.435	31.519	31.603	31.686
LIFT / LOWER	-0.004	0.000	-0.001	0.029	0.127	0.242	0.358	0.460	0.546	0.621	0.646	0.598	0.529	0.443	0.355	0.269
VERTICAL ALIGNMENT	L=15.000 G=0.127%		L=20.000 R=1342.540			L=50.211 G=1.617%					L=23.337 R=3000.000		L=90.095 G=0.839%			
HORIZONTAL ALIGNMENT	L=90.846															
CANT ALIGNMENT	D = 0mm, I = 0mm										L=15.000 dD/dt = 0mm/s dl/dt = 31.4mm/s dD/ds = 0mm/m		R=-495.0 L=46.573 D = 0mm, I = 42.4mm			

**EAST BRANCH LINE PROFILE**  
SCALE 1:250 (H) 1:25 (V)



**Disclaimer**

© Irish Rail (2023). This drawing is confidential and the copyright in it is owned by Irish Rail. This drawing must not be either loaned, copied or otherwise reproduced in whole or in part or used for any purpose without the prior permission of Irish Rail.

© OpenStreetMap contributors

© Ordnance Survey Ireland and Government of Ireland. All O.S. data used for plans are printed under Copyright Ordnance Survey Ireland 0039723 (OSI Aerial Data or OSI Lidar Data) & 2023/OSI, NMA, 150 (OSI Vector Data). All elevations are in metres and relate to OSI Geoid Model (OSGM02) Mean Head as defined by existing Project Control. All Co-ordinates are in Irish Transverse Mercator Grid (ITM) as defined by OSI active GPS station Tallaght College (TLLG).



Rev	Date	Drn	Chk'd	App'd	Description
P01	13/10/2023	CF	SS	DS	PLANNING ISSUE

Client: **Iarnród Éireann Irish Rail**

Engineering Designer: **ARUP**

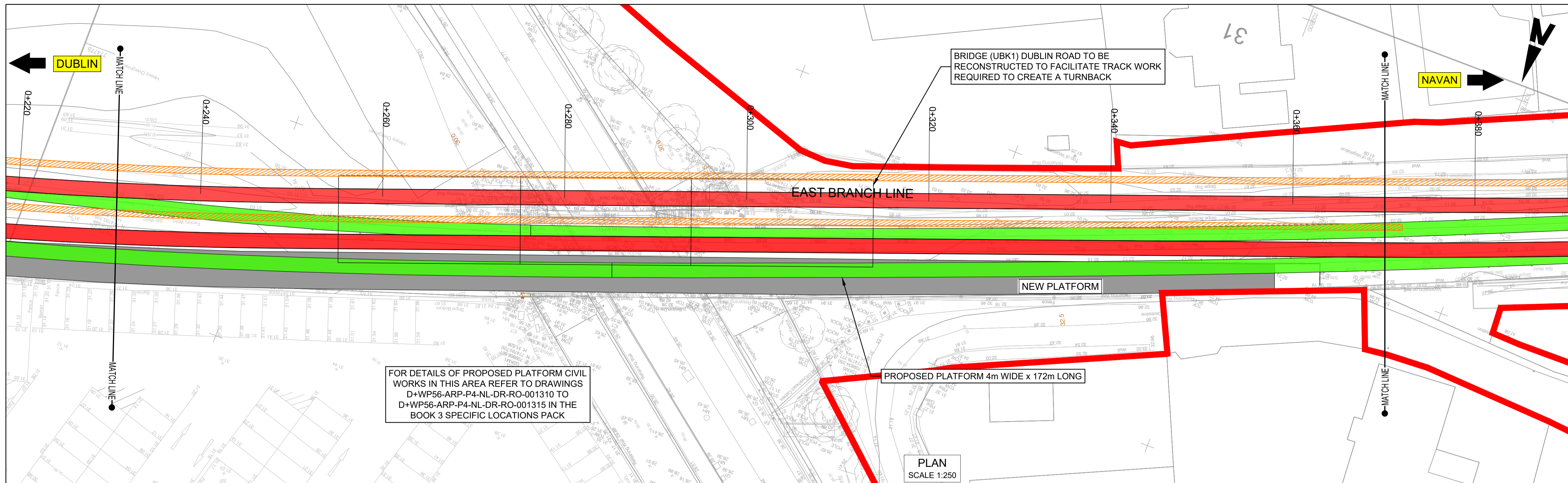
Date: 01/06/2023 | Scale: AS SHOWN @ A1 | Drawn: CF | Checked: SS | Approved: DB

Project Code: D+WP56 | Originator Code: ARP | QMS Code: 280275-00

Project Title	<b>DART+ COASTAL NORTH</b>		
Drawing Title	<b>DROGHEDA TURNBACK TRACK ALIGNMENT</b>		
Drawing File Name	D+WP56-ARP-P3-NL-DR-RO-001303	Sheet Number	04 of 06
Status	S3	Rev	P01

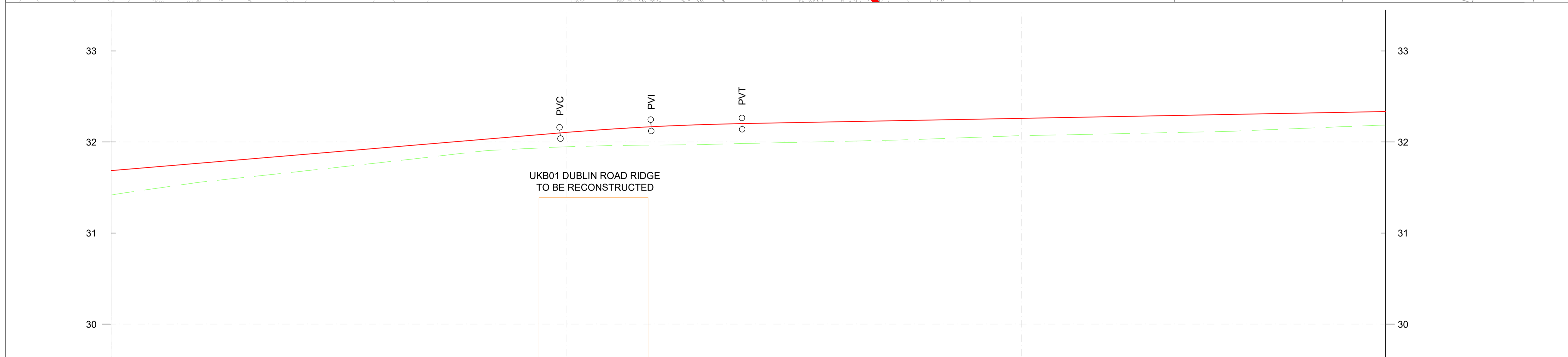
DO NOT SCALE USE FIGURED DIMENSIONS ONLY

C:\bms\arup-eur-pw-01\dms\37345D+WP56-ARP-P4-NL-DR-RO-001300\_1305.dwg



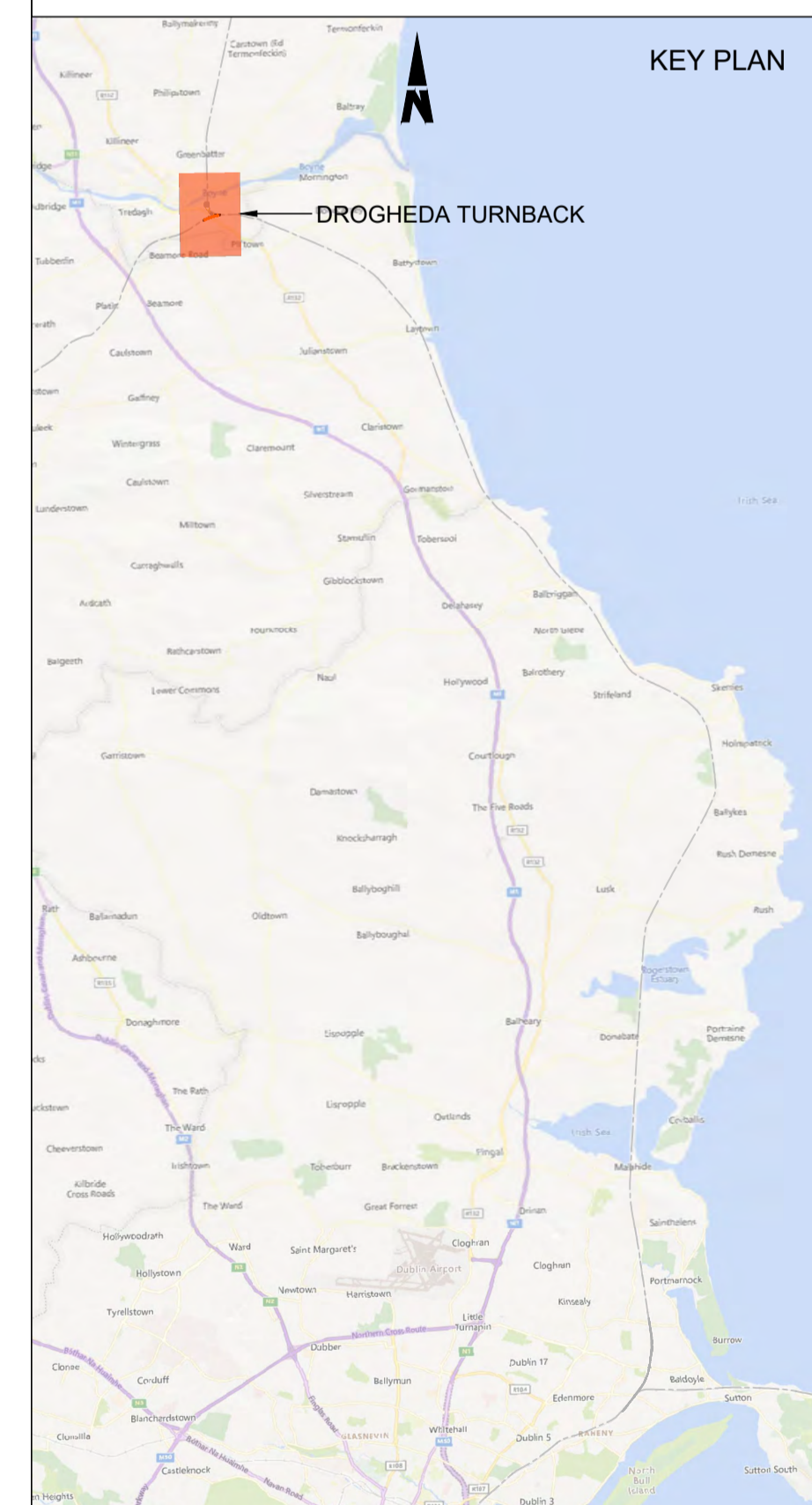
- NOTES**
- Chainages, levels and coordinates are shown in meters. All other dimensions are shown in millimeters, unless otherwise stated. All clearance and six-foot intervals are quoted to running edges (RE)
  - The maximum available length for a raised driver walkway has been shown. The exact length may be shorter and will be determined at the detailed stage of design
  - Track gauge to be nominal 1602mm for plain line and 1600mm for P&C
  - All P&C shall be vertical rail. All P&C geometries shall be in accordance with IE manufacturers' drawings and CCE-TMS-300 Track Construction Requirements and Tolerances
  - Radii quoted are from track centreline, unless otherwise stated
  - Modular compliant layouts throughout
  - Proposed and existing overhead line equipment (OHLE) is not shown in plan or profile. Refer to Book 3 Linear Works Plans for OHLE shown in plan.
  - For details of lineside civils infrastructure such as troughing routes and substations, refer to the Book 3 Linear Works Plans.

- LEGEND**
- PLAN**
- DEVELOPMENT BOUNDARY
  - RUNNING LINE
  - SIDINGS
  - PROPOSED TRACK WORK
  - TRACK WORK TO BE REMOVED
  - EXISTING STATION PLATFORMS
  - RAISED 1.38m DRIVER WALKWAY
  - CESS WALKWAY
  - PROPOSED STATION PLATFORMS
- LONGITUDINAL PROFILE**
- PROPOSED MAIN RAIL
  - EXISTING MAIN RAIL
  - EXISTING GROUND
- PVC (Point of Start of Curve)  
PVT (Point of Start of Tangent)  
PVI (Point of Intersection)
- CROSS SECTION**
- PROPOSED ELEMENTS
  - EXISTING ELEMENTS
  - EXISTING GROUND



CHAINAGE	0+230	0+240	0+250	0+260	0+270	0+280	0+290	0+300	0+310	0+320	0+330	0+340	0+350	0+360	0+370
EXISTING LEVEL	31.417	31.562	31.669	31.779	31.892	31.988	32.000	32.016	32.041	32.069	32.101	32.125	32.147	32.182	32.222
PROPOSED LEVEL	31.686	31.770	31.854	31.938	32.022	32.106	32.171	32.204	32.222	32.241	32.260	32.278	32.297	32.316	32.334
LIFT / LOWER	0.269	0.209	0.185	0.159	0.130	0.122	0.171	0.187	0.181	0.172	0.159	0.154	0.150	0.133	0.113
VERTICAL ALIGNMENT	L=90.095 G=0.839%					L=20.000 R=3067.887					L=157.955 G=0.187%				
HORIZONTAL ALIGNMENT	R=-495.00 L=46.573		L=28.038			L=108.064									
CANT ALIGNMENT	D = 0mm I = 42.4mm		dD/dt = 0mm/s di/dt = 16.8mm/s dD/ds = 0mm/m			D = 0mm, I = 0mm									

**EAST BRANCH LINE PROFILE**  
SCALE 1:250 (H) 1:25 (V)



**Disclaimer**

© Irish Rail (2023). This drawing is confidential and the copyright in it is owned by Irish Rail. This drawing must not be either loaned, copied or otherwise reproduced in whole or in part or used for any purpose without the prior permission of Irish Rail.

© OpenStreetMap contributors

© Ordnance Survey Ireland and Government of Ireland. All O.S. data used for plans are printed under Copyright Ordnance Survey Ireland 0039723 (OSI Aerial Data or OSI Lidar Data) & 2023/OSI, MMA, 150 (OSI Vector Data). All elevations are in metres and relate to OSI Geoid Model (OSGM02) Mean Head as defined by existing Project Control. All Co-ordinates are in Irish Transverse Mercator Grid (ITM) as defined by OSI active GPS station Tallaght College (TLLG).

Rev	Date	Drn	Chk'd	App'd	Description
P01	13/10/2023	CF	SS	DS	PLANNING ISSUE

Client: **Iarnród Éireann Irish Rail**

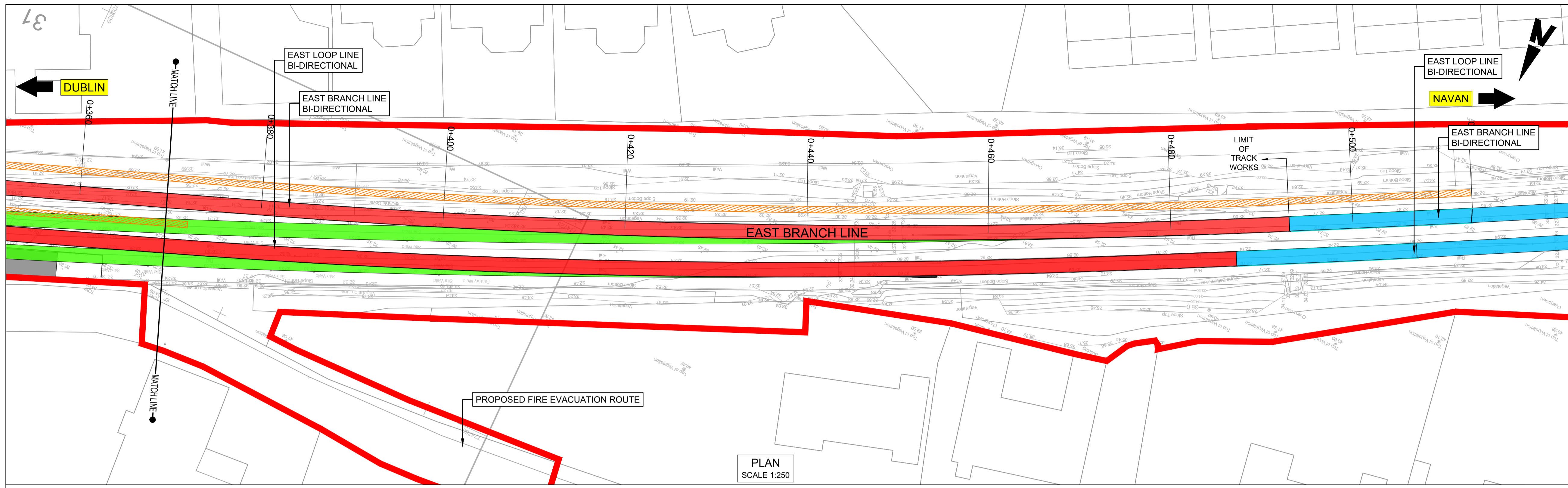
Engineering Designer: **ARUP**

Date: 01/06/2023 | Scale: AS SHOWN @ A1

Drawn: CF | Checked: SS | Approved: DB

Project Code: D+WP56 | Originator Code: ARP | QMS Code: 280275-00

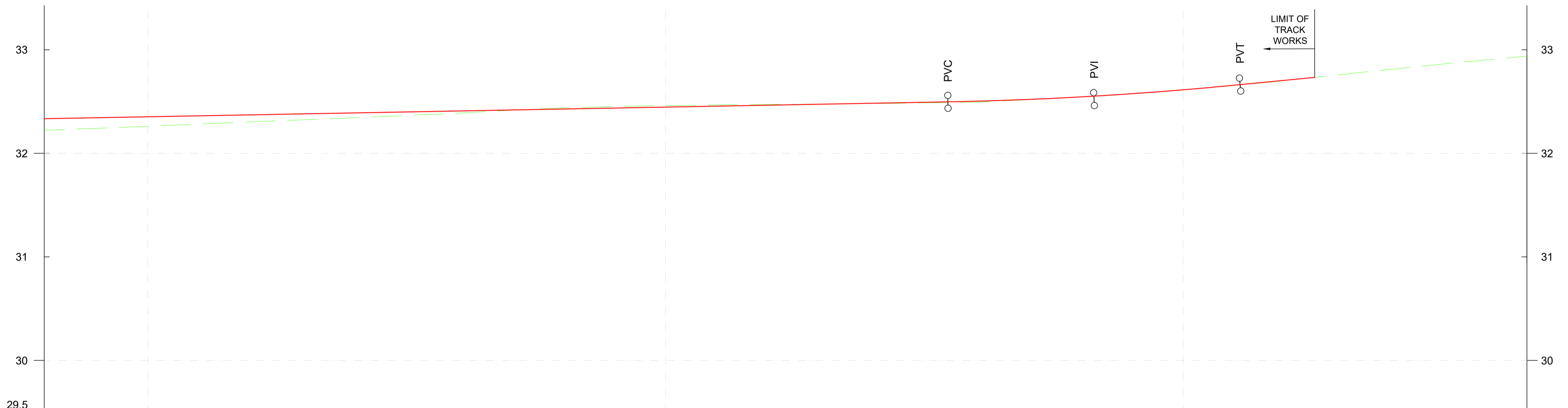
Project Title	<b>DART+ COASTAL NORTH</b>		
Drawing Title	<b>DROGHEDA TURNBACK TRACK ALIGNMENT</b>		
Drawing File Name	D+WP56-ARP-P3-NL-DR-RO-001304	Sheet Number	05 of 06
Status	S3	Rev	P01



PLAN  
SCALE 1:250

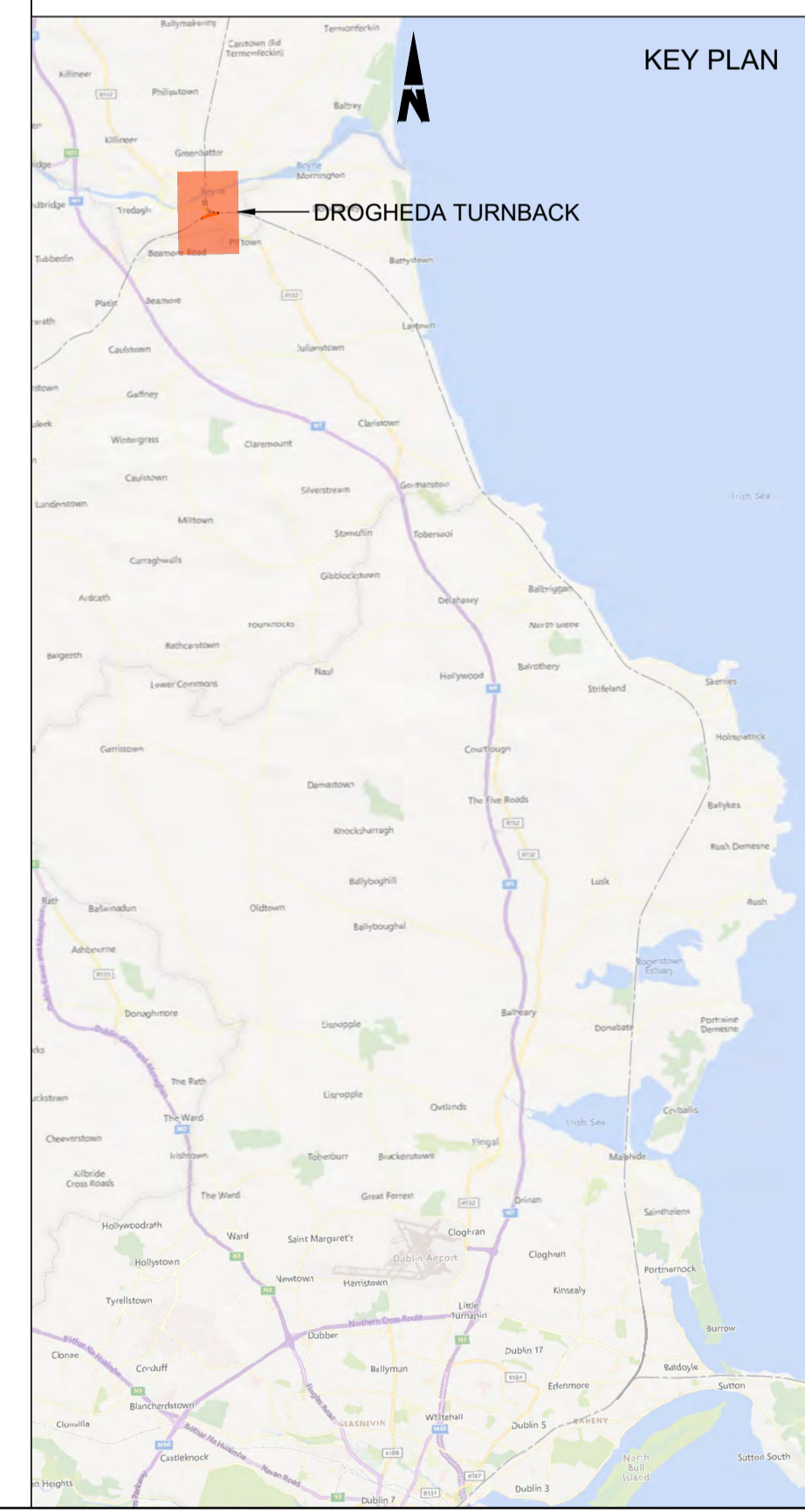
- NOTES**
- Chainages, levels and coordinates are shown in meters. All other dimensions are shown in millimeters, unless otherwise stated. All clearance and six-foot intervals are quoted to running edges (RE)
  - The maximum available length for a raised driver walkway has been shown. The exact length may be shorter and will be determined at the detailed stage of design
  - Track gauge to be nominal 1602mm for plain line and 1600mm for P&C
  - All P&C shall be vertical rail. All P&C geometries shall be in accordance with IE manufacturers' drawings and CCE-TMS-300 Track Construction Requirements and Tolerances
  - Radii quoted are from track centreline, unless otherwise stated
  - Modular compliant layouts throughout
  - Proposed and existing overhead line equipment (OHLE) is not shown in plan or profile. Refer to Book 3 Linear Works Plans for OHLE shown in plan.
  - For details of lineside civils infrastructure such as troughing routes and substations, refer to the Book 3 Linear Works Plans.

- LEGEND**
- PLAN**
- DEVELOPMENT BOUNDARY
  - RUNNING LINE
  - SIDINGS
  - PROPOSED TRACK WORK
  - TRACK WORK TO BE REMOVED
  - EXISTING STATION PLATFORMS
  - RAISED 1.38m DRIVER WALKWAY
  - CESS WALKWAY
  - PROPOSED STATION PLATFORMS
- LONGITUDINAL PROFILE**
- PROPOSED MAIN RAIL
  - EXISTING MAIN RAIL
  - EXISTING GROUND
- PVC (Point of Start of Curve)  
PVT (Point of Start of Tangent)  
PVI (Point of Intersection)
- CROSS SECTION**
- PROPOSED ELEMENTS
  - EXISTING ELEMENTS
  - EXISTING GROUND



CHAINAGE	0+370	0+380	0+390	0+400	0+410	0+420	0+430	0+440	0+450	0+460	0+470	0+480	0+490	0+500	0+510
EXISTING LEVEL	32.222	32.261	32.304	32.343	32.389	32.437	32.480	32.471	32.480	32.495	32.545	32.614	32.705	32.81	32.909
PROPOSED LEVEL	32.334	32.353	32.372	32.390	32.409	32.428	32.446	32.465	32.484	32.503	32.544	32.613	32.708	32.808	32.907
LIFT / LOWER	0.113	0.092	0.067	0.047	0.020	-0.009	-0.014	-0.006	0.003	0.009	-0.001	0.000	0.003	-0.002	-0.002
VERTICAL ALIGNMENT	<p>L=157.955 G=0.187%</p> <p>L=28.219 R=3500.000</p> <p>L=27.7705 G=0.993%</p>														
HORIZONTAL ALIGNMENT	<p>L=108.064</p> <p>L=15.000</p> <p>R=900.000 L=90.662</p> <p>L=15.000</p> <p>R=2442.343 L=20.000</p>														
CANT ALIGNMENT	<p>dD/dt = 0mm/s dl/dt = 17.6mm/s dD/ds = 0mm/m</p> <p>D = 0mm, l = 23.6mm</p> <p>dD/dt = 0mm/s dl/dt = 11.1mm/s dD/ds = 0mm/m</p> <p>D = 0mm, l = 8.7mm</p>														

EAST BRANCH LINE PROFILE  
SCALE 1:250 (H) 1:25 (V)



KEY PLAN

C:\bms\arup-eur-pw-01\dms\37345D-WP56-ARP-P4-NL-DR-RO-001300\_1305.dwg

**Disclaimer**

© Irish Rail (2023). This drawing is confidential and the copyright in it is owned by Irish Rail. This drawing must not be either loaned, copied or otherwise reproduced in whole or in part or used for any purpose without the prior permission of Irish Rail.

© OpenStreetMap contributors

© Ordnance Survey Ireland and Government of Ireland. All O.S. data used for plans are printed under Copyright Ordnance Survey Ireland 0039723 (OSI Aerial Data or OSI Lidar Data) & 2023/OSI, NMA, 150 (OSI Vector Data). All elevations are in metres and relate to OSI Geoid Model (OSGM02) Mean Head as defined by existing Project Control. All Co-ordinates are in Irish Transverse Mercator Grid (ITM) as defined by OSI active GPS station Tallaght College (TLG).



Rev	Date	Drn	Chk'd	App'd	Description
P01	13/10/2023	CF	SS	DS	PLANNING ISSUE

Client: **Iarnród Éireann Irish Rail**

Engineering Designer: **ARUP**

Date: 01/06/2023 | Scale: AS SHOWN @ A1

Drawn: CF | Checked: SS | Approved: DB

Project Code: D+WP56 | Originator Code: ARP | QMS Code: 280275-00

Project Title	<b>DART+ COASTAL NORTH</b>		
Drawing Title	<b>DROGHEDA TURNBACK TRACK ALIGNMENT</b>		
Drawing File Name	D+WP56-ARP-P3-NL-DR-RO-001305	Sheet Number	06 of 06
Status	S3	Rev	P01

DO NOT SCALE USE FIGURED DIMENSIONS ONLY



**NOTES**

- Chainages, levels and coordinates are shown in meters. All other dimensions are shown in millimeters, unless otherwise stated. All clearance and six-foot intervals are quoted to running edges (RE)
- Drogheda: Chainage datum for the East Branch Line is 0+000 located at the toe of the existing turnout 216A on the Down Main Cess Rail
- Track gauge to be nominal 1602mm for plain line and 1600mm for P&C
- All P&C shall be vertical rail. All P&C geometries shall be in accordance with IE manufacturers' drawings and CCE-TMS-300 Track Construction Requirements and Tolerances
- Radii quoted are from track centreline, unless otherwise stated
- Modular compliant layouts throughout

**LEGEND**

**PLAN**

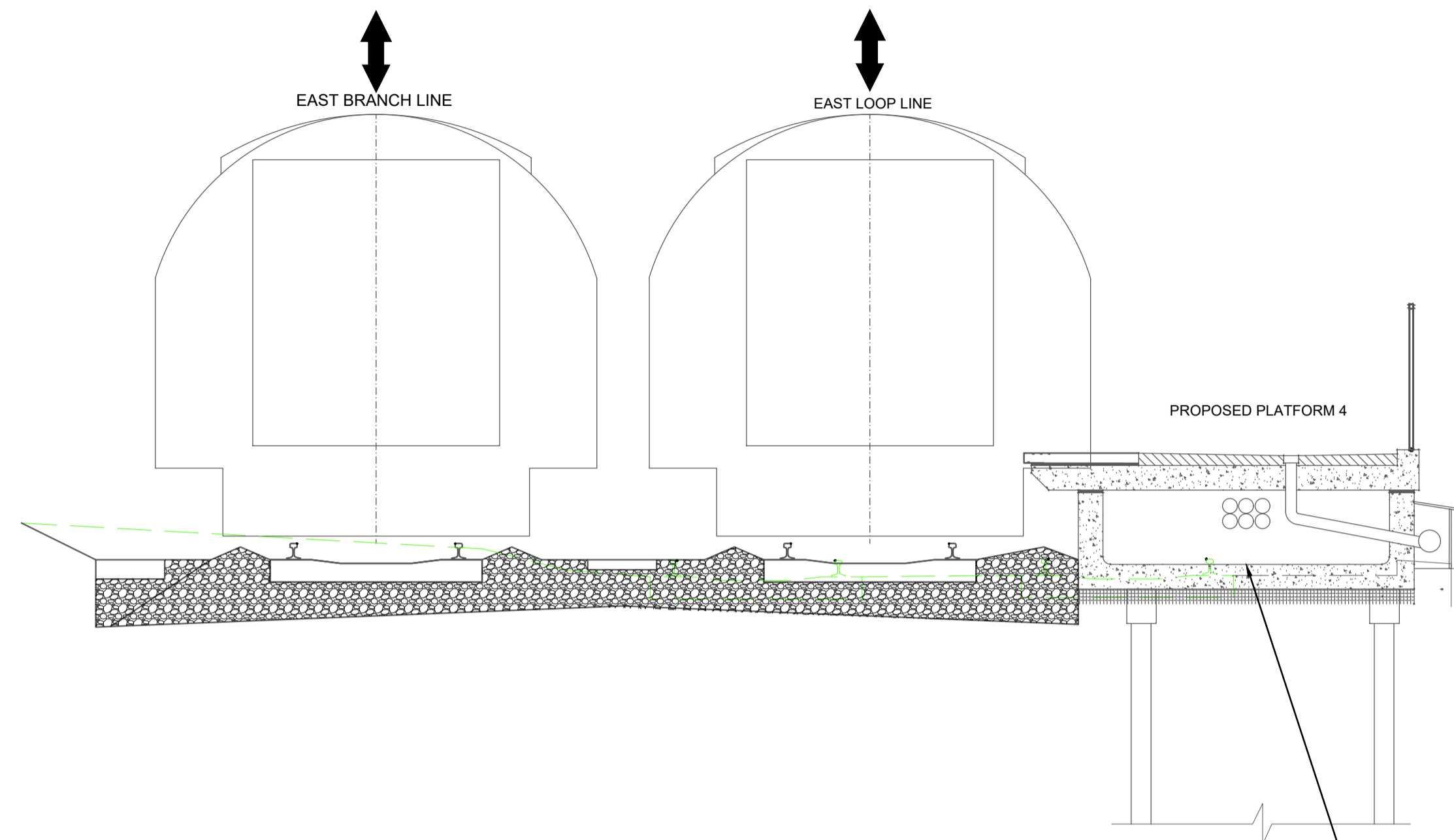
- DEVELOPMENT BOUNDARY
- RUNNING LINE
- SIDINGS
- PROPOSED TRACK WORK
- TRACK WORK TO BE REMOVED
- EXISTING STATION PLATFORMS
- RAISED 1.38m DRIVER WALKWAY
- CESS WALKWAY

**LONGITUDINAL PROFILE**

- PROPOSED MAIN RAIL
- EXISTING MAIN RAIL
- EXISTING GROUND
- PVC (Point of Start of Curve)
- PVT (Point of Start of Tangent)
- PVI (Point of Intersection)

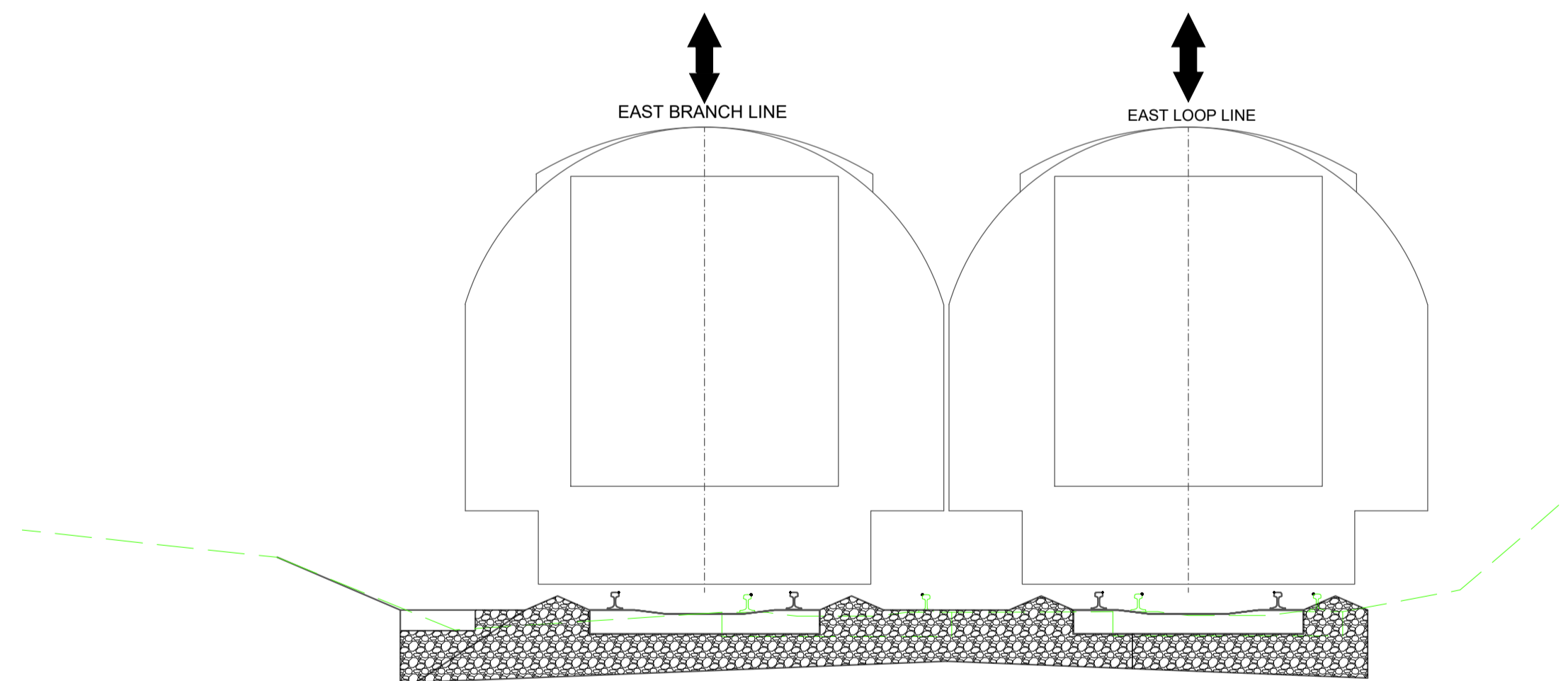
**CROSS SECTION**

- PROPOSED ELEMENTS
- EXISTING ELEMENTS
- EXISTING GROUND

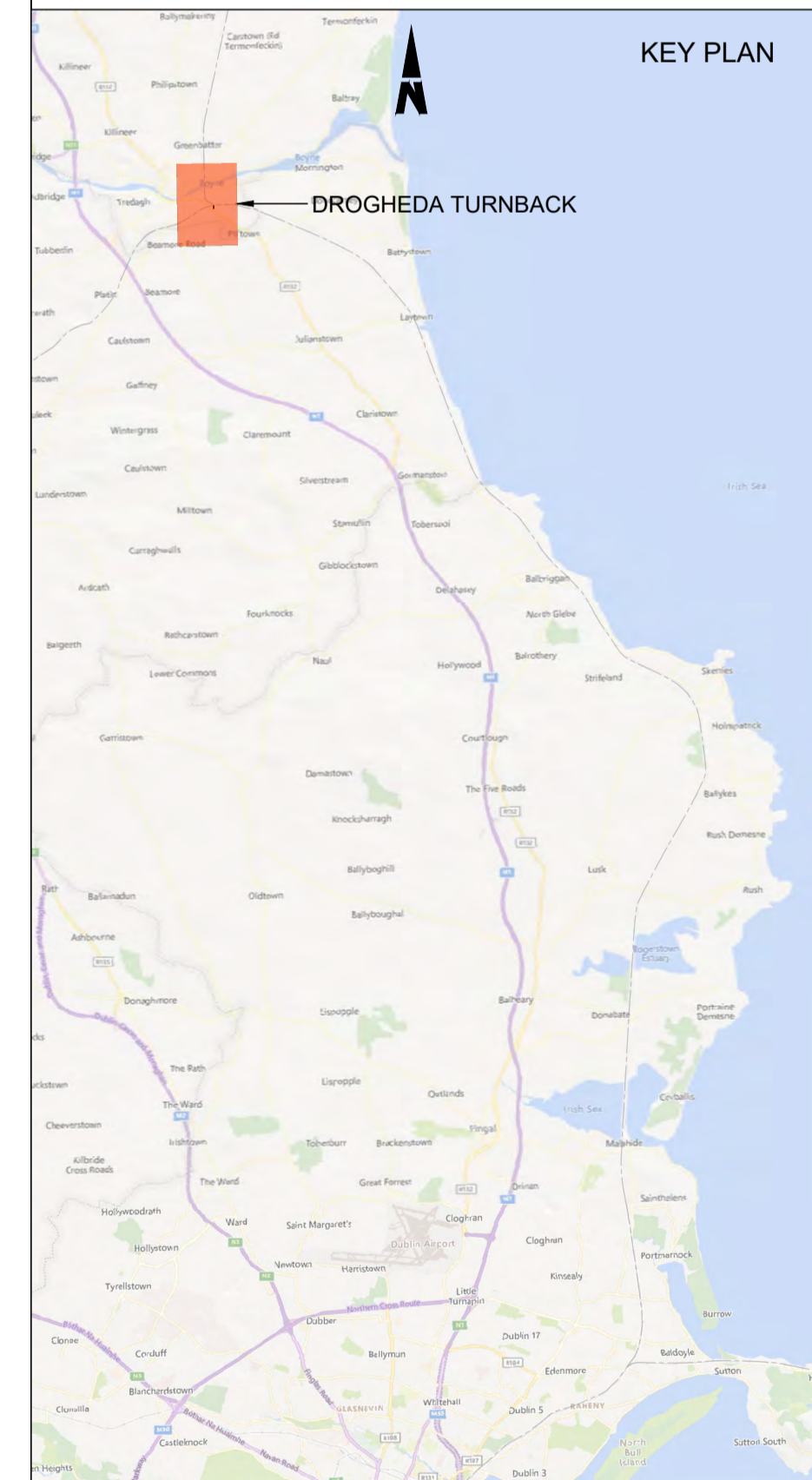


TYPICAL CROSS SECTION CHAINAGE 0+310

FOR DETAILS OF PROPOSED PLATFORM CIVIL WORKS IN THIS AREA REFER TO DRAWINGS D+WP56-ARP-P4-NL-DR-RO-001310 TO D+WP56-ARP-P4-NL-DR-RO-001315 IN THE BOOK 3 SPECIFIC LOCATIONS PACK



TYPICAL CROSS SECTION CHAINAGE 0+410



**Disclaimer**  
 © Irish Rail (2023). This drawing is confidential and the copyright in it is owned by Irish Rail. This drawing must not be either loaned, copied or otherwise reproduced in whole or in part or used for any purpose without the prior permission of Irish Rail.  
 © OpenStreetMap contributors  
 © Ordnance Survey Ireland and Government of Ireland. All O.S. data used for plans are printed under Copyright Ordnance Survey Ireland 0039723 (OSI Aerial Data or OSI Lidar Data) & 2023/OSI, NMA, 150 (OSI Vector Data). All elevations are in metres and relate to OSI Geoid Model (OSGM02) Mean Head as defined by existing Project Control. All Co-ordinates are in Irish Transverse Mercator Grid (ITM) as defined by OSI active GPS station Tallaght College (TLLG).



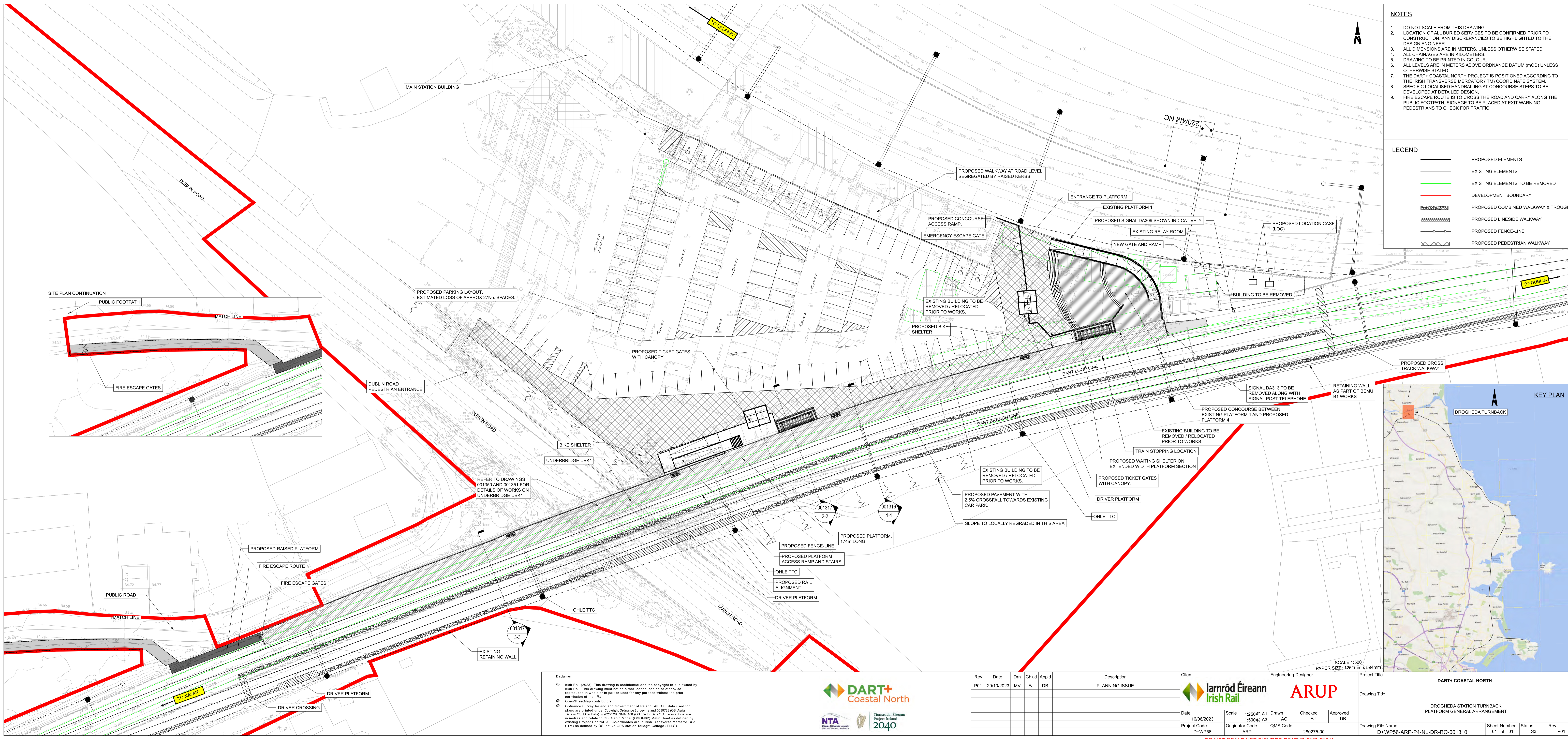
Rev	Date	Drn	Chk'd	App'd	Description
P01	01/09/2023	CF	SS	DB	PLANNING ISSUE

Client <b>Iarnród Éireann Irish Rail</b>		Engineering Designer <b>ARUP</b>		
Date 01/06/2023	Scale 1:25 @ A1	Drawn CF	Checked SS	Approved DB
Project Code D+WP56	Originator Code ARP	QMS Code 280275-00		

Project Title <b>DART+ COASTAL NORTH</b>			
Drawing Title <b>DROGHEDA TURNBACK TYPICAL CROSS SECTIONS</b>			
Drawing File Name D+WP56-ARP-P3-NL-DR-RO-001306	Sheet Number 01 of 01	Status S3	Rev P01

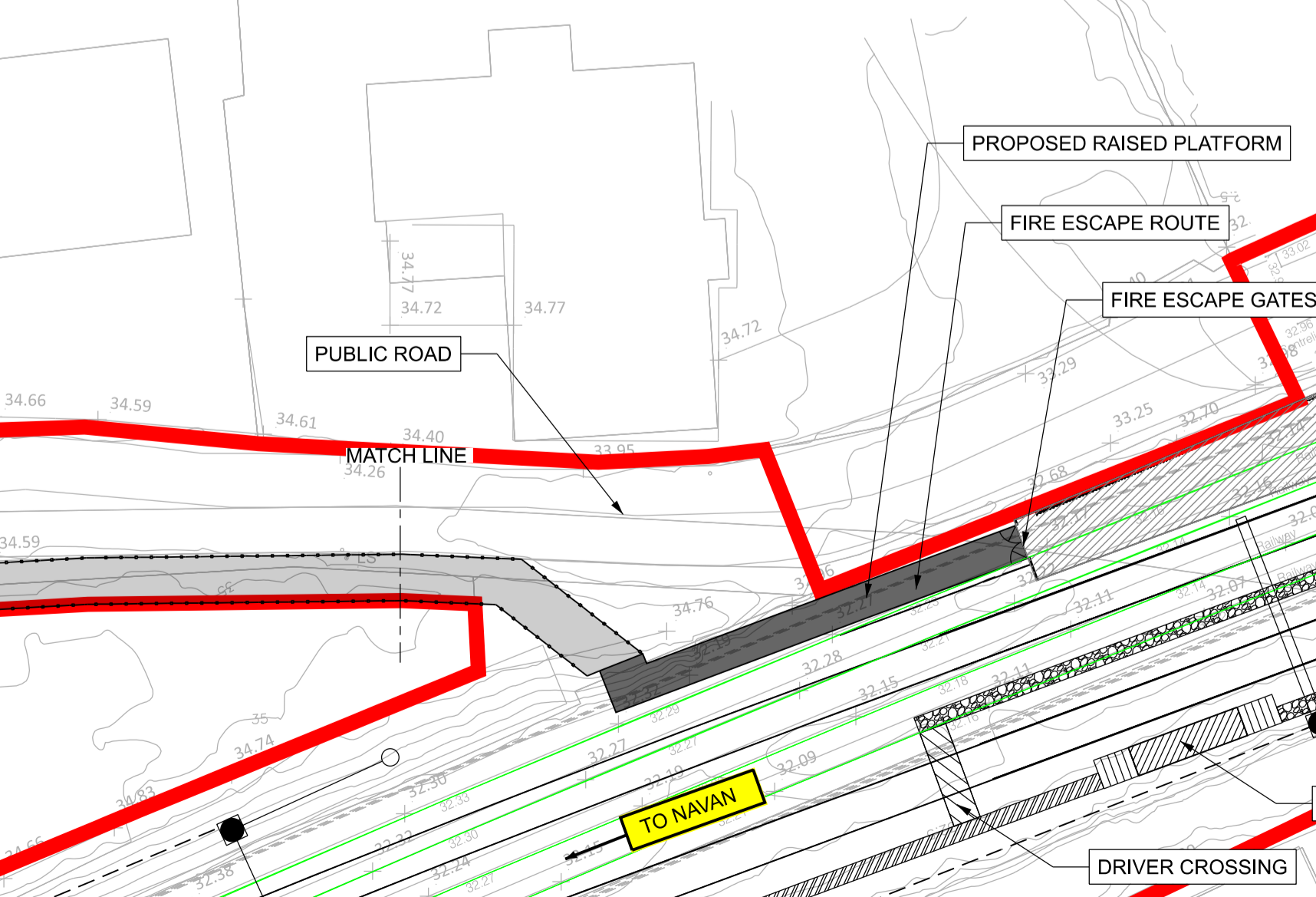
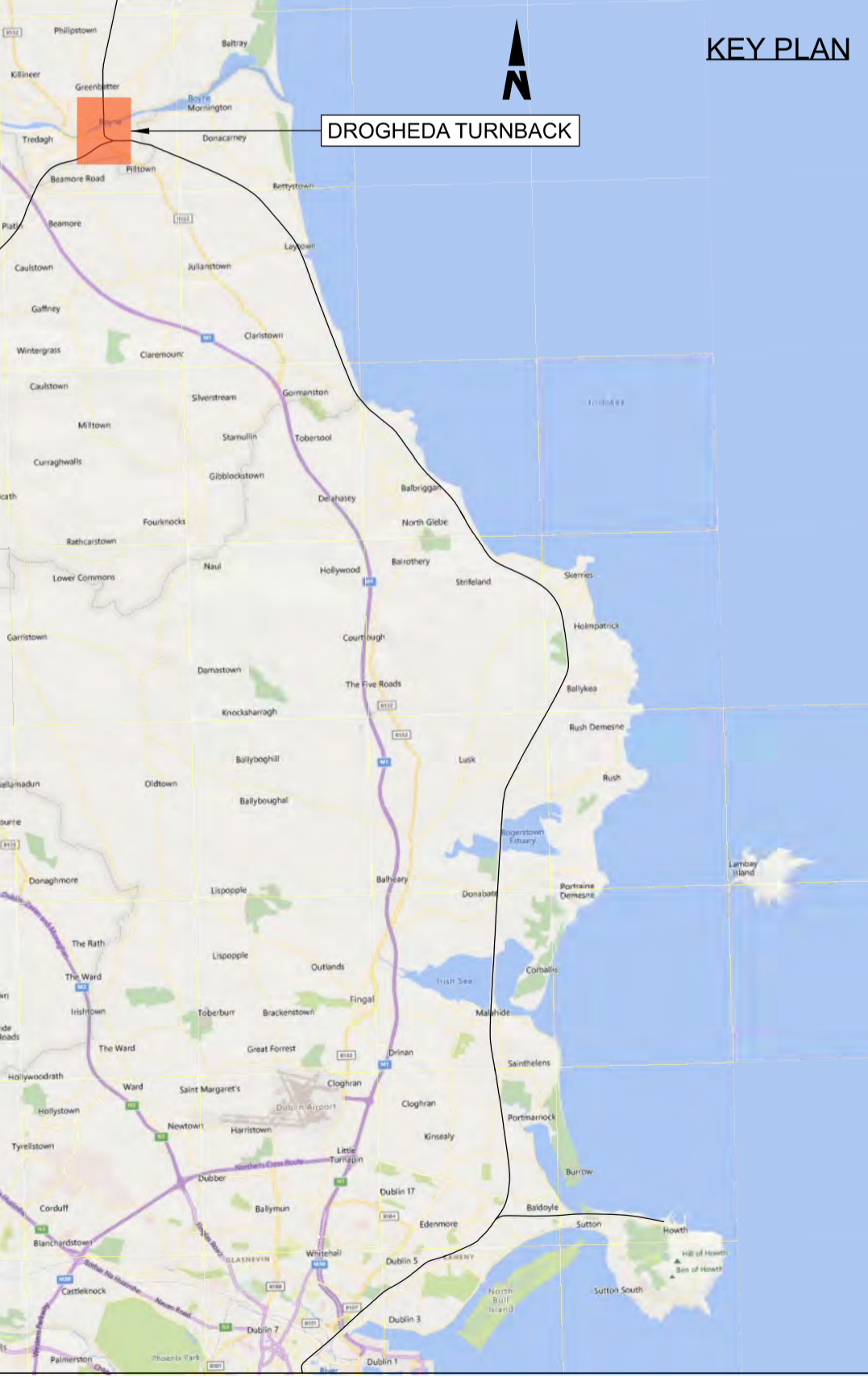
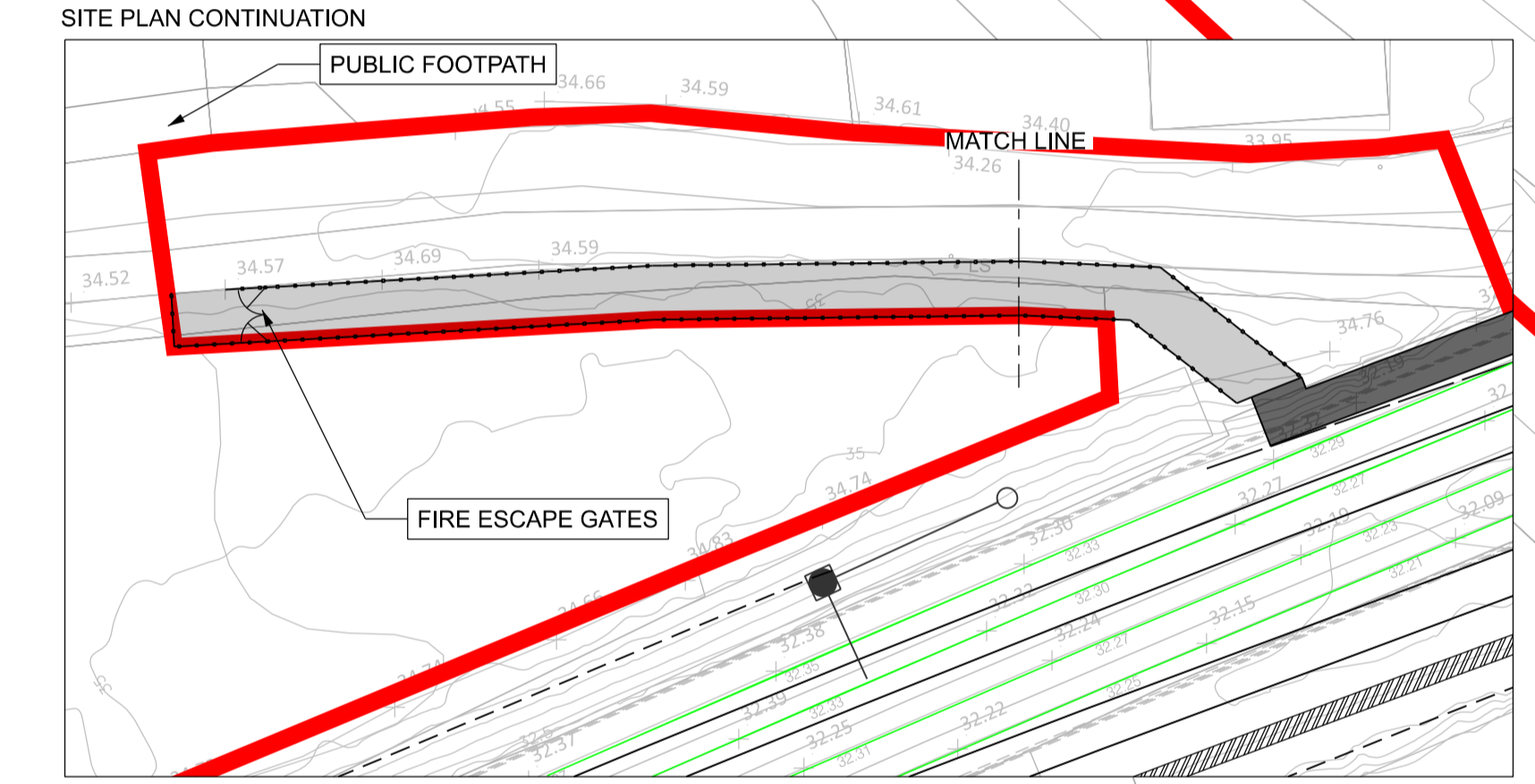
DO NOT SCALE USE FIGURED DIMENSIONS ONLY

C:\bms\arup-eur-pw-01\dms\37345D-WP56-ARP-P4-NL-DR-RO-001306.dwg



- NOTES**
- DO NOT SCALE FROM THIS DRAWING.
  - LOCATION OF ALL BURIED SERVICES TO BE CONFIRMED PRIOR TO CONSTRUCTION. ANY DISCREPANCIES TO BE HIGHLIGHTED TO THE DESIGN ENGINEER.
  - ALL DIMENSIONS ARE IN METERS, UNLESS OTHERWISE STATED.
  - ALL CHANGES ARE IN KILOMETERS.
  - DRAWING TO BE PRINTED IN COLOUR.
  - ALL LEVELS ARE IN METERS ABOVE ORDNANCE DATUM (MOD) UNLESS OTHERWISE STATED.
  - THE DART+ COASTAL NORTH PROJECT IS POSITIONED ACCORDING TO THE IRISH TRANSVERSE MERCATOR (ITM) COORDINATE SYSTEM.
  - SPECIFIC LOCALISED HANDRAILING AT CONCOURSE STEPS TO BE DEVELOPED AT DETAILED DESIGN.
  - FIRE ESCAPE ROUTE IS TO CROSS THE ROAD AND CARRY ALONG THE PUBLIC FOOTPATH. SIGNAGE TO BE PLACED AT EXIT WARNING PEDESTRIANS TO CHECK FOR TRAFFIC.

- LEGEND**
- PROPOSED ELEMENTS
  - EXISTING ELEMENTS
  - EXISTING ELEMENTS TO BE REMOVED
  - DEVELOPMENT BOUNDARY
  - PROPOSED COMBINED WALKWAY & TROUGH
  - PROPOSED LINESIDE WALKWAY
  - PROPOSED FENCE-LINE
  - PROPOSED PEDESTRIAN WALKWAY



**Disclaimer**

© Irish Rail (2023). This drawing is confidential and the copyright in it is owned by Irish Rail. This drawing must not be either loaned, copied or otherwise reproduced in whole or in part or used for any purpose without the prior permission of Irish Rail.

© OpenStreetMap contributors

© Ordnance Survey Ireland and Government of Ireland. All O.S. data used for plans are printed under Copyright Ordnance Survey Ireland 000723 (OSI Aerial Data or OSI LIDAR Data & 2023/OSI\_NMA\_180 (OSI Vector Data). All elevations are in metres and relate to OSI Geoid Model (OSGM02) Mean Head as defined by existing Project Control. All Co-ordinates are in Irish Transverse Mercator Grid (ITM) as defined by OSI active GPS station Tallaght College (TLG).



Rev	Date	Drn	Chk'd	App'd	Description
P01	20/10/2023	MV	EJ	DB	PLANNING ISSUE

Client: **Irish Rail**

Engineering Designer: **ARUP**

Date: 16/06/2023 Scale: 1:250 @ A1, 1:500 @ A3

Project Code: D-WP56 Originator Code: ARP

Drawn: AC Checked: EJ Approved: DB

QMS Code: 280275-00

Project Title: **DART+ COASTAL NORTH**

Drawing Title: **DROGHEDA STATION TURNBACK PLATFORM GENERAL ARRANGEMENT**

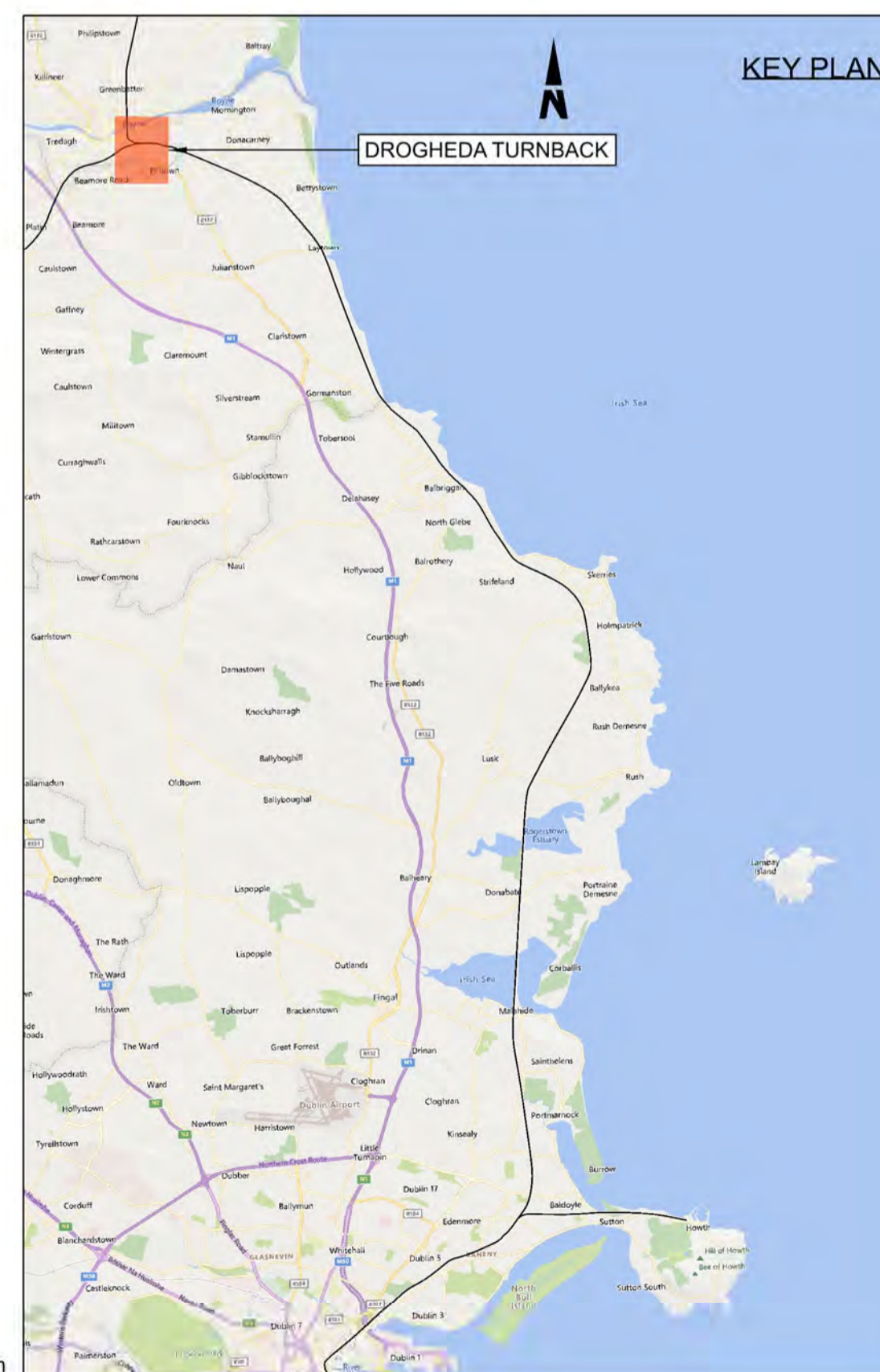
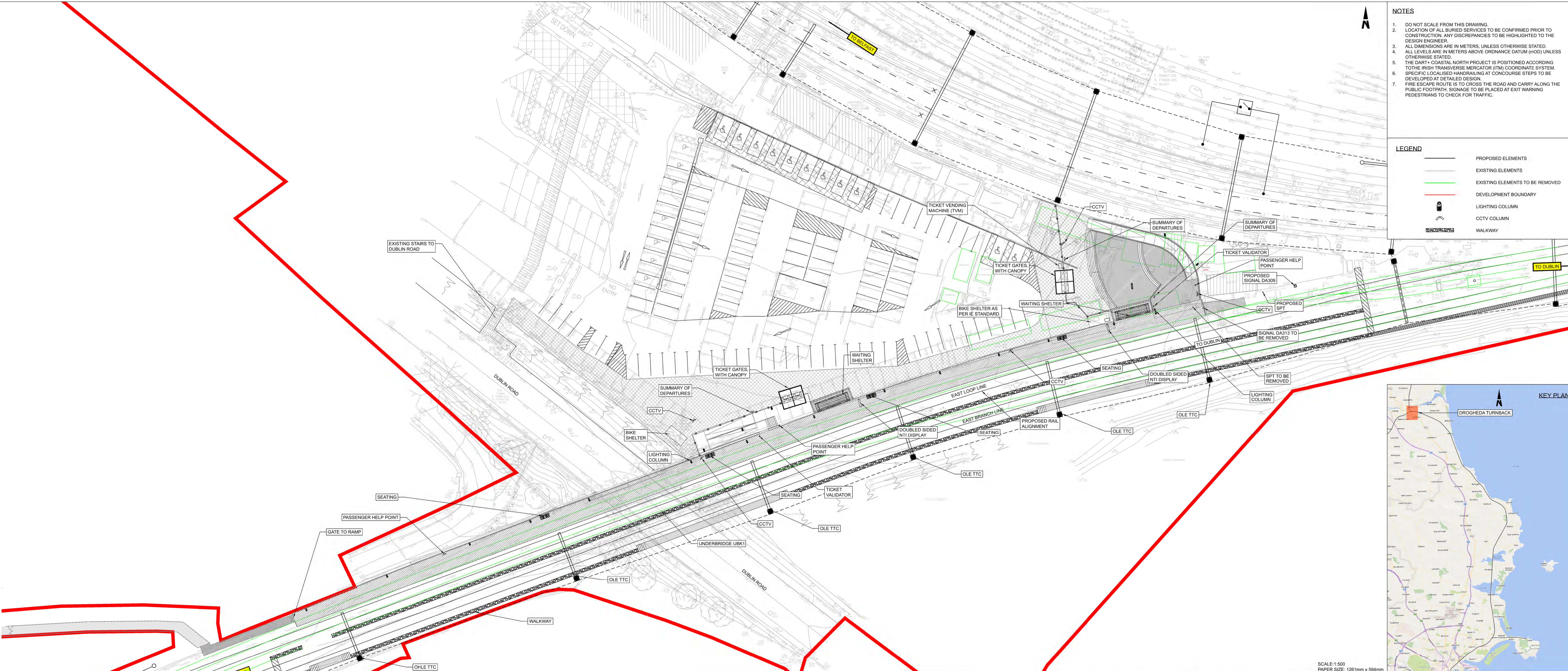
Drawing File Name: D+WP56-ARP-P4-NL-DR-RO-001310

Sheet Number	Status	Rev
01 of 01	S3	P01

DO NOT SCALE USE FIGURED DIMENSIONS ONLY

- NOTES**
- DO NOT SCALE FROM THIS DRAWING.
  - LOCATION OF ALL BURIED SERVICES TO BE CONFIRMED PRIOR TO CONSTRUCTION. ANY DISCREPANCIES TO BE HIGHLIGHTED TO THE DESIGN ENGINEER.
  - ALL DIMENSIONS ARE IN METERS, UNLESS OTHERWISE STATED.
  - ALL LEVELS ARE IN METERS ABOVE ORDINANCE DATUM (mOD) UNLESS OTHERWISE STATED.
  - THE DART+ COASTAL NORTH PROJECT IS POSITIONED ACCORDING TO THE IRISH TRANSVERSE MERCATOR (ITM) COORDINATE SYSTEM. SPECIFIC LOCALISED HANDRAILING AT CONCOURSE STEPS TO BE DEVELOPED AT DETAILED DESIGN.
  - FIRE ESCAPE ROUTE IS TO CROSS THE ROAD AND CARRY ALONG THE PUBLIC FOOTPATH. SIGNAGE TO BE PLACED AT EXIT WARNING PEDESTRIANS TO CHECK FOR TRAFFIC.

- LEGEND**
- PROPOSED ELEMENTS
  - EXISTING ELEMENTS
  - EXISTING ELEMENTS TO BE REMOVED
  - DEVELOPMENT BOUNDARY
  - LIGHTING COLUMN
  - CCTV COLUMN
  - WALKWAY



**Disclaimer**

© Irish Rail (2023). This drawing is confidential and the copyright in it is owned by Irish Rail. This drawing must not be either loaned, copied or otherwise reproduced in whole or in part or used for any purpose without the prior permission of Irish Rail.

© OpenStreetMap contributors

© Ordnance Survey Ireland and Government of Ireland. All O.S. data used for plans are printed under Copyright Ordnance Survey Ireland 0039723 (OSI) Aerial Data or OSi Lidar Data & 2023/OSi, NMA, 180 (OSi Vector Data). All elevations are in metres and relate to OSi Geoid Model (OSGM02) Mean Head as defined by existing Project Control. All Co-ordinates are in Irish Transverse Mercator Grid (ITM) as defined by OSi active GPS station Tallaght College (TLG).



Rev	Date	Drn	Chk'd	App'd	Description
PO1	20/10/2023	MV	EJ	DB	PLANNING ISSUE

Client: **Iarnród Éireann Irish Rail**

Engineering Designer: **ARUP**

Date: 01/06/2023 Scale: AS SHOWN @ A1 Drawn: AC Checked: EJ Approved: DB

Project Code: D+WP56 Originator Code: ARP GMS Code: 280275-00

Project Title: **DART+ COASTAL NORTH**

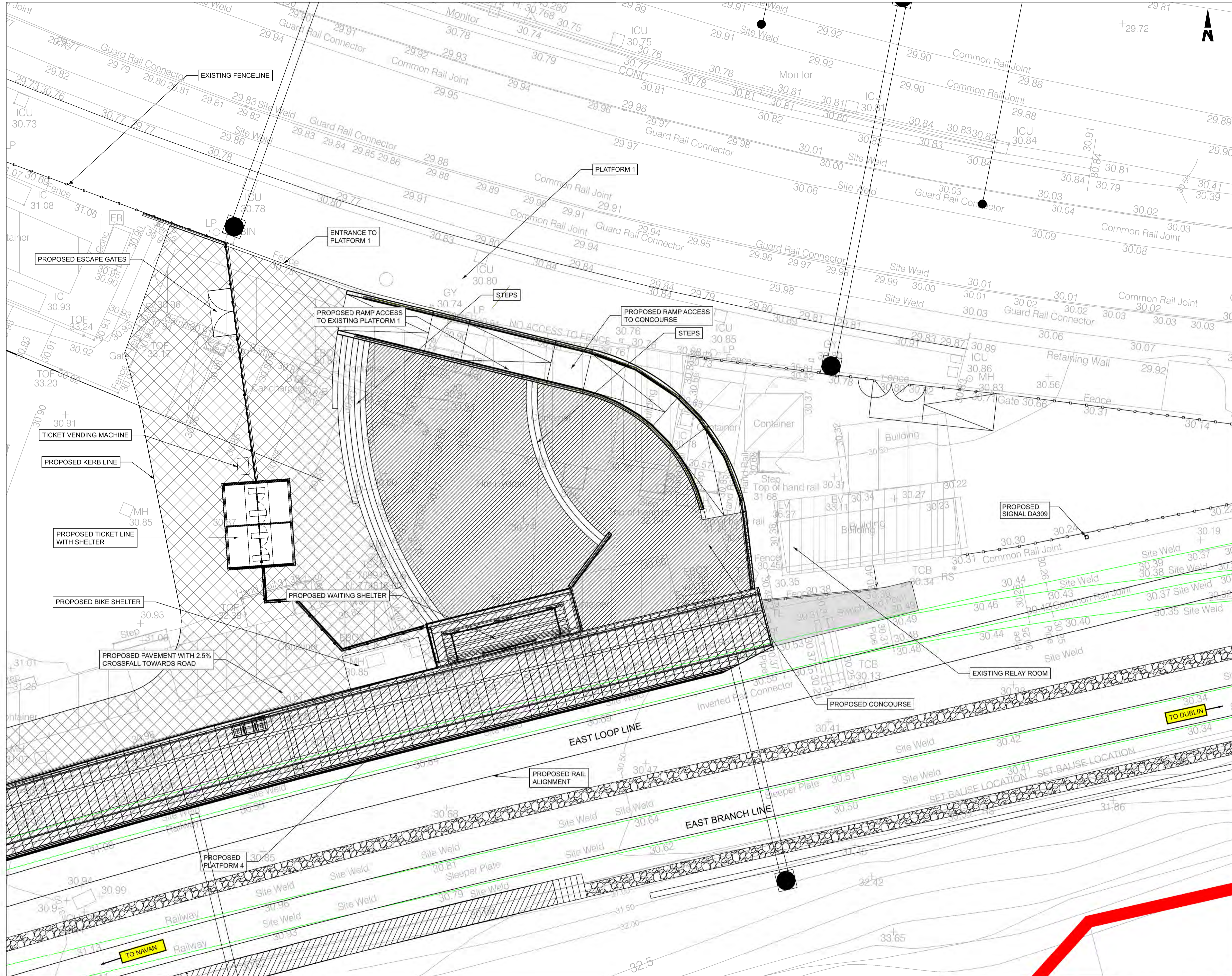
Drawing Title: **DROGHEDA STATION TURNBACK PLATFORM EQUIPMENT LAYOUT**

Drawing File Name: D+WP56-ARP-P4-NL-DR-RO-001311

Sheet Number	Status	Rev
01 of 01	S3	P01

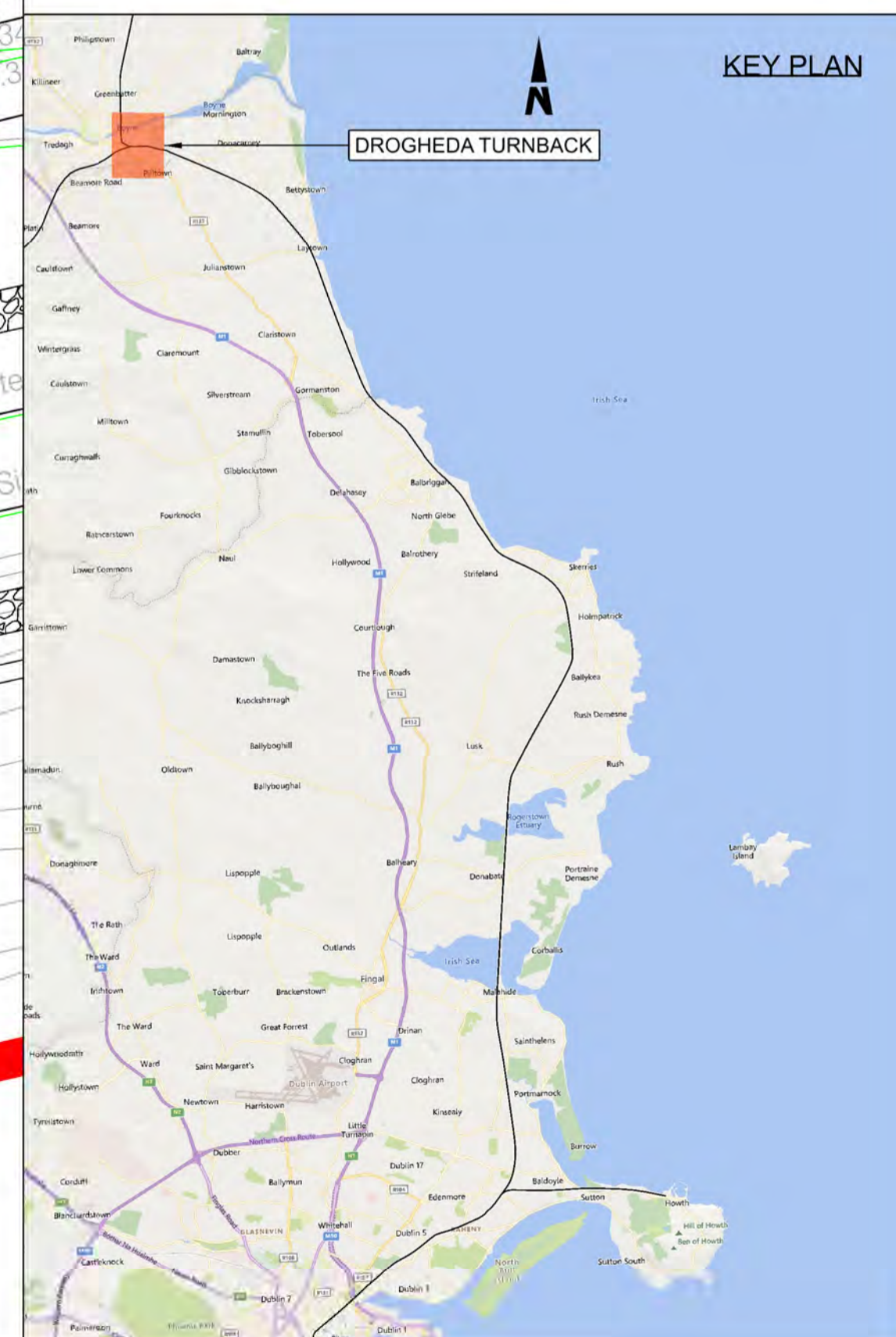
SCALE: 1:500 PAPER SIZE: 1261mm x 594mm

DO NOT SCALE USE FIGURED DIMENSIONS ONLY



- NOTES**
1. ALL MEASUREMENTS ARE IN METERS UNLESS NOTED OTHERWISE.
  2. ALL LEVELS ARE IN METERS ABOVE ORDNANCE DATUM (MOD), UNLESS NOTED OTHERWISE.
  3. ANY LOCATIONS OF EXISTING SERVICES ARE SHOWN INDICATIVELY ONLY AND SHOULD BE CONFIRMED ON SITE.
  4. THE DART+ COASTAL PROJECT IS POSITIONED ACCORDING TO THE IRISH TRANSVERSE MERCATOR (ITM) COORDINATE SYSTEM.
  5. SPECIFIC LOCALISED HANDRAILING AT CONCOURSE STEPS TO BE DEVELOPED AT DETAILED DESIGN.

- LEGEND**
- PROPOSED ELEMENTS
  - EXISTING ELEMENTS
  - EXISTING ELEMENTS TO BE REMOVED
  - DEVELOPMENT BOUNDARY



**Disclaimer**

© Irish Rail (2023). This drawing is confidential and the copyright in it is owned by Irish Rail. This drawing must not be either loaned, copied or otherwise reproduced in whole or in part or used for any purpose without the prior permission of Irish Rail.

© OpenStreetMap contributors

© Ordnance Survey Ireland and Government of Ireland. All O.S. data used for plans are printed under Copyright Ordnance Survey Ireland 0039723 (OSI Aerial Data or OSI Lidar Data) & 2023/OSI, JMA, 180 (OSI Vector Data). All elevations are in metres and relate to OSI Geoid Model (OSGM02) Mean Head as defined by existing Project Control. All Co-ordinates are in Irish Transverse Mercator Grid (ITM) as defined by OSI active GPS station Tallaght College (TLG).

Rev	Date	Drn	Chk'd	App'd	Description
P01	20/10/2023	AC	EJ	DB	PLANNING ISSUE

Client: **Iarnród Éireann Irish Rail**

Engineering Designer: **ARUP**

Date: 01/06/2023 Scale: 1:100 @ A1, 1:200 @ A3

Project Code: D+WP56 Originator Code: ARP

QMS Code: 280275-00

Drawn: AC, Checked: EJ, Approved: DB

Project Title: <b>DART+ COASTAL NORTH</b>			
Drawing Title: <b>DROGHEDA STATION TURNBACK PLATFORM CONCOUSE LAYOUT</b>			
Drawing File Name: <b>D+WP56-ARP-P4-NL-DR-RO-001313</b>	Sheet Number: <b>01 of 01</b>	Status: <b>S3</b>	Rev: <b>P01</b>

DO NOT SCALE USE FIGURED DIMENSIONS ONLY